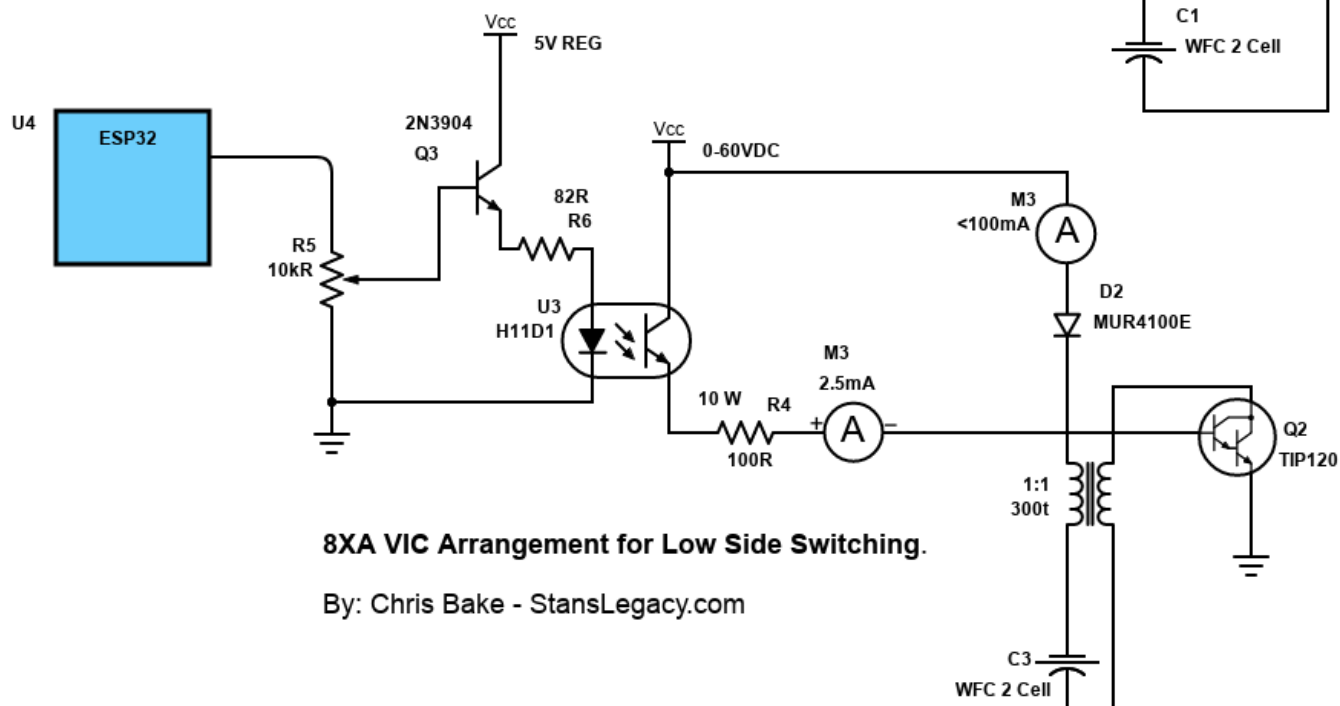
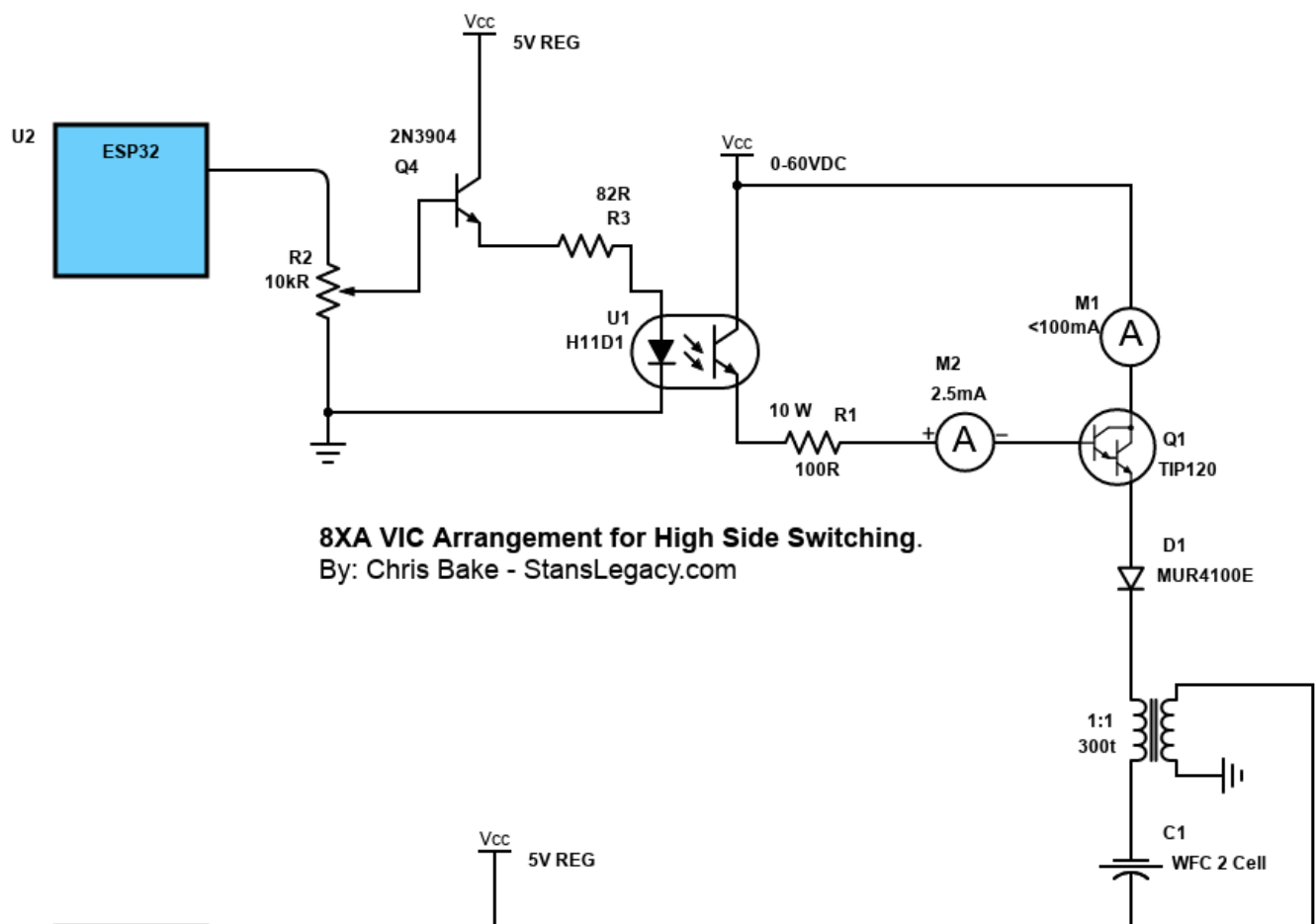
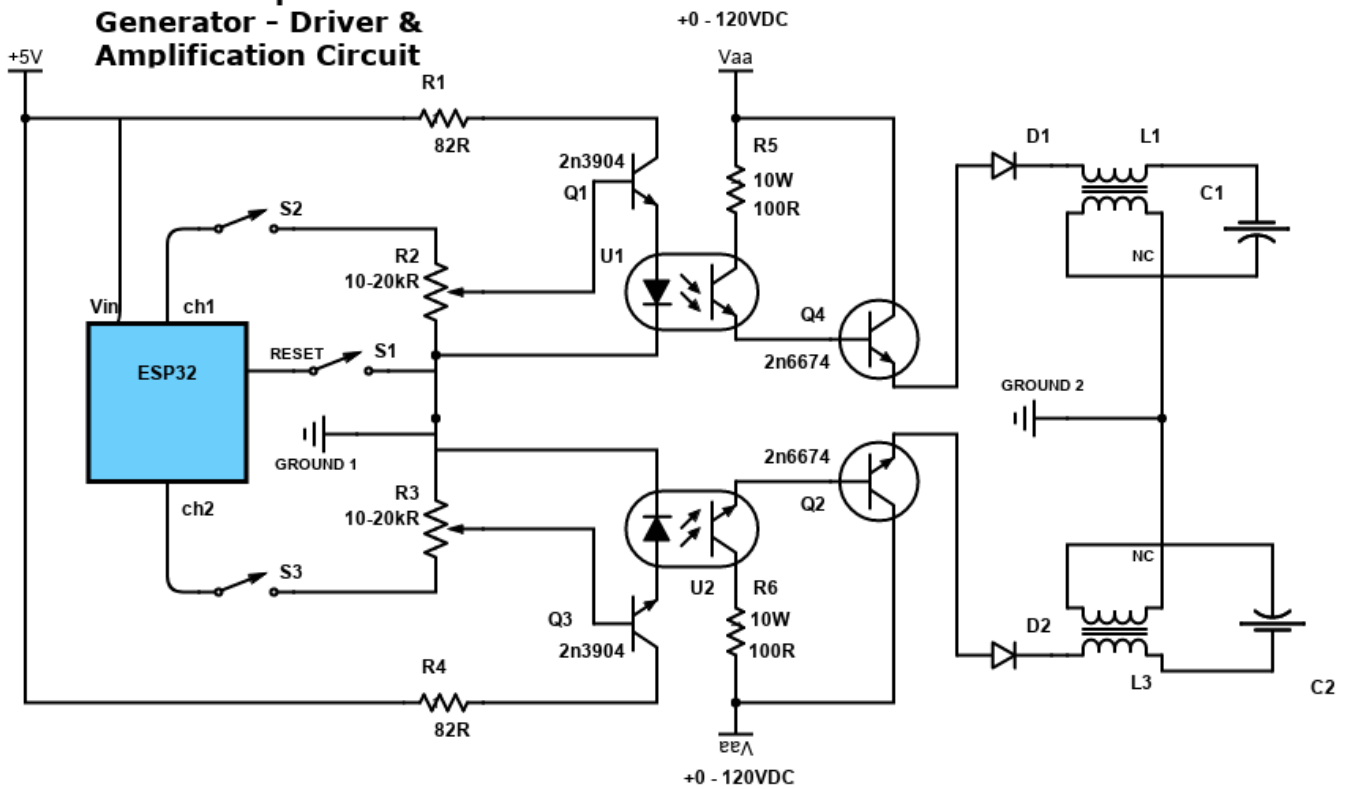


ESP32 - CWG Driver & Amplification

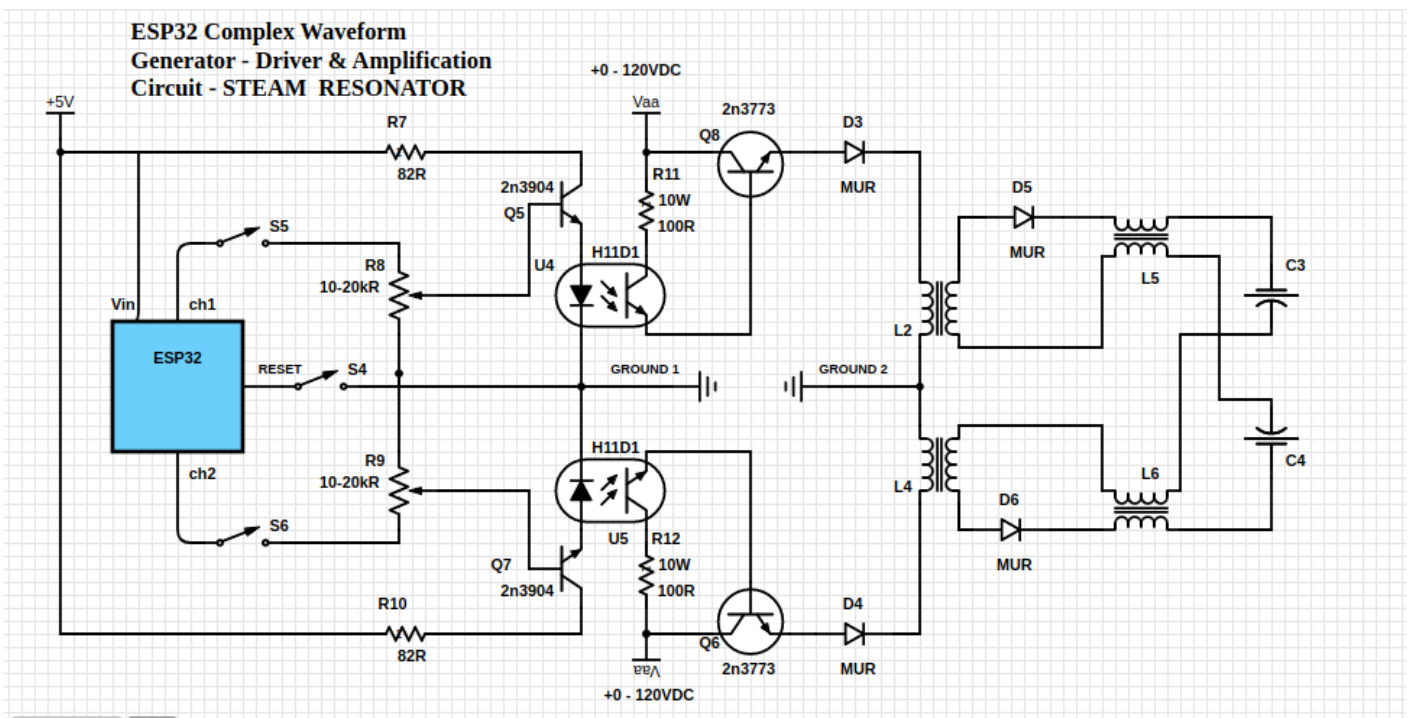
A dual channel, dual isolated power supply, pulse amplification for driving all VIC arrangements



ESP32 Complex Waveform Generator - Driver & Amplification Circuit

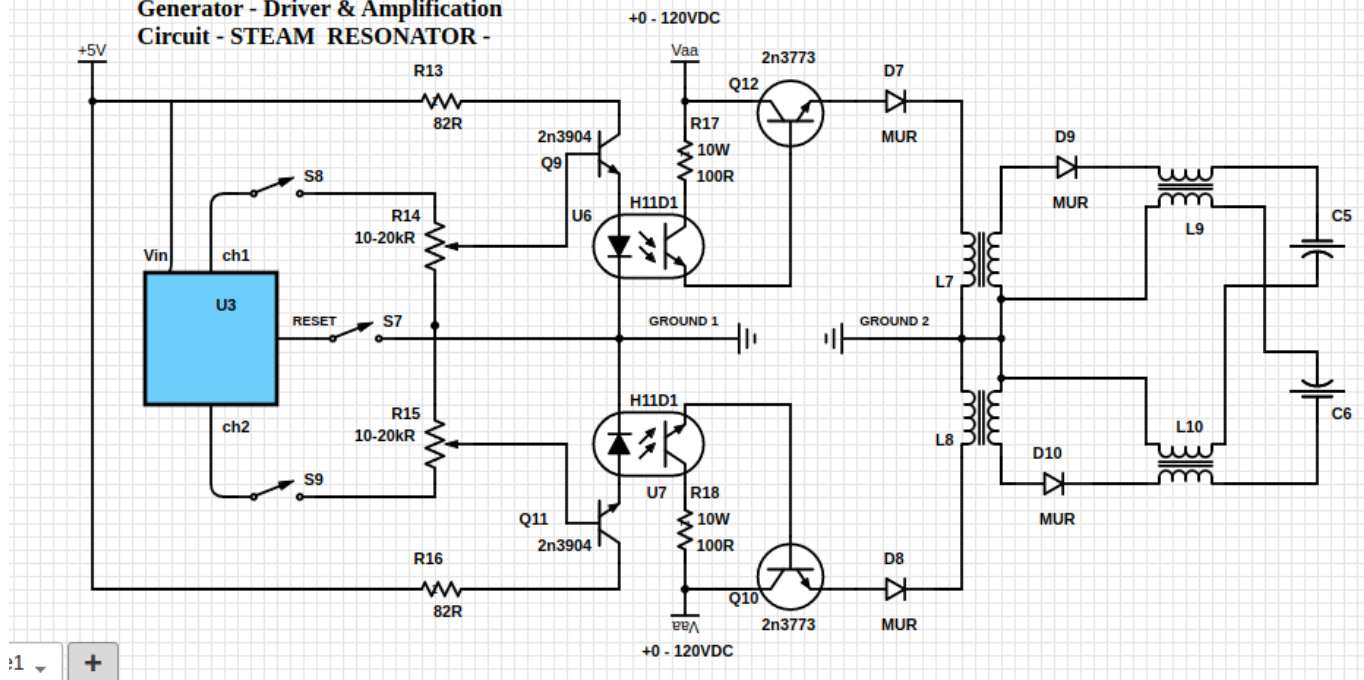


Arrangement favoring Particle Oscillation as an Energy Generator



Variation 2 - Ground Bonded / "Forced" Uni-polar Operation

ESP32 Complex Waveform Generator - Driver & Amplification Circuit - STEAM RESONATOR -



Revision #3

Created 26 December 2022 02:25:12 by Chris Bake

Updated 25 February 2023 05:00:23 by Chris Bake