

Gas Processor Replication

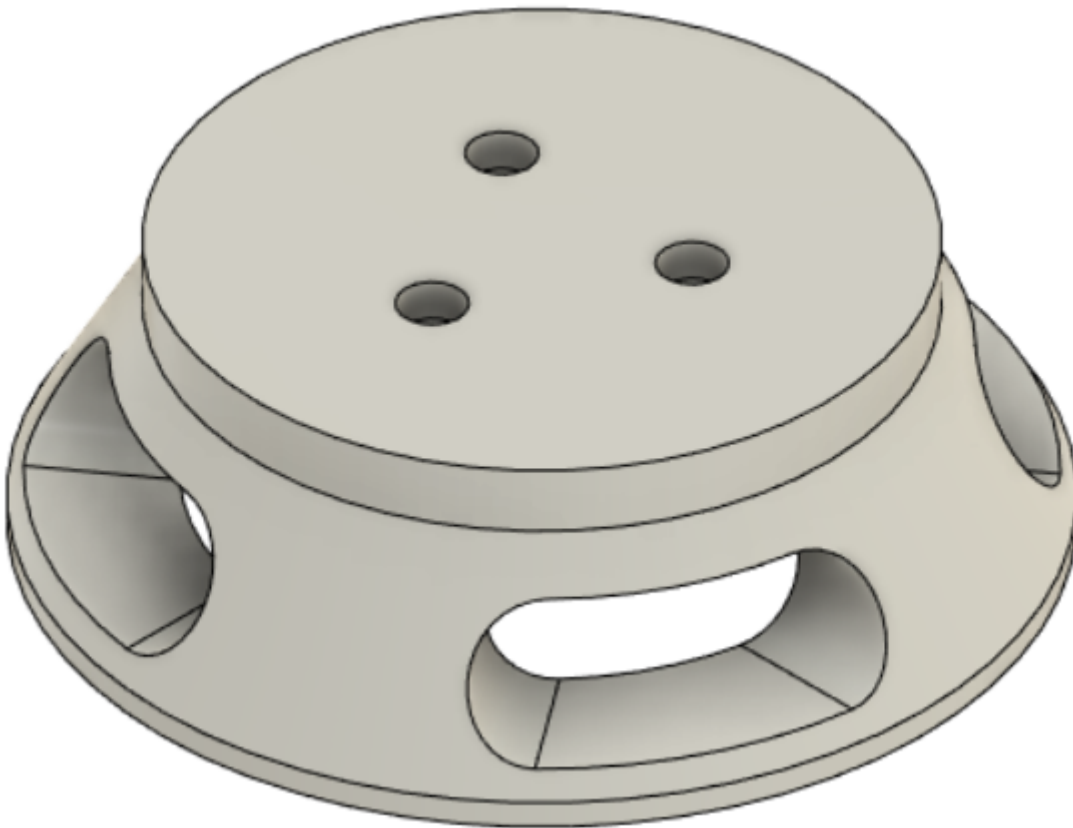
- 3D Printable Replication

3D Printable Replication

RETAINING CAP:

(100% Fill: 65G) , (50% Fill: 45G)

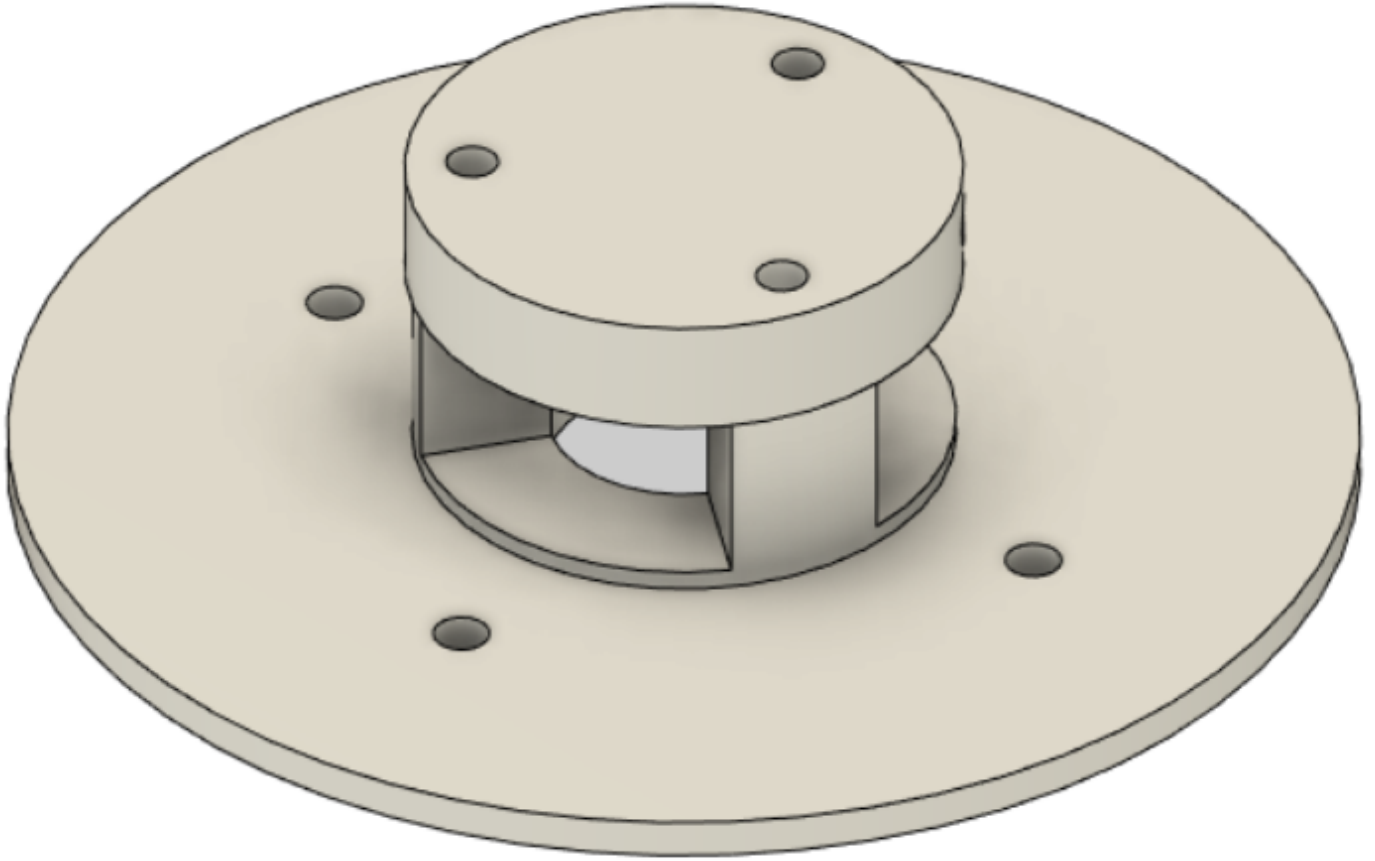
Retaining Cap.stl



UPPER INTAKE:

(100% Fill: 29G) , (50% Fill: 23G)

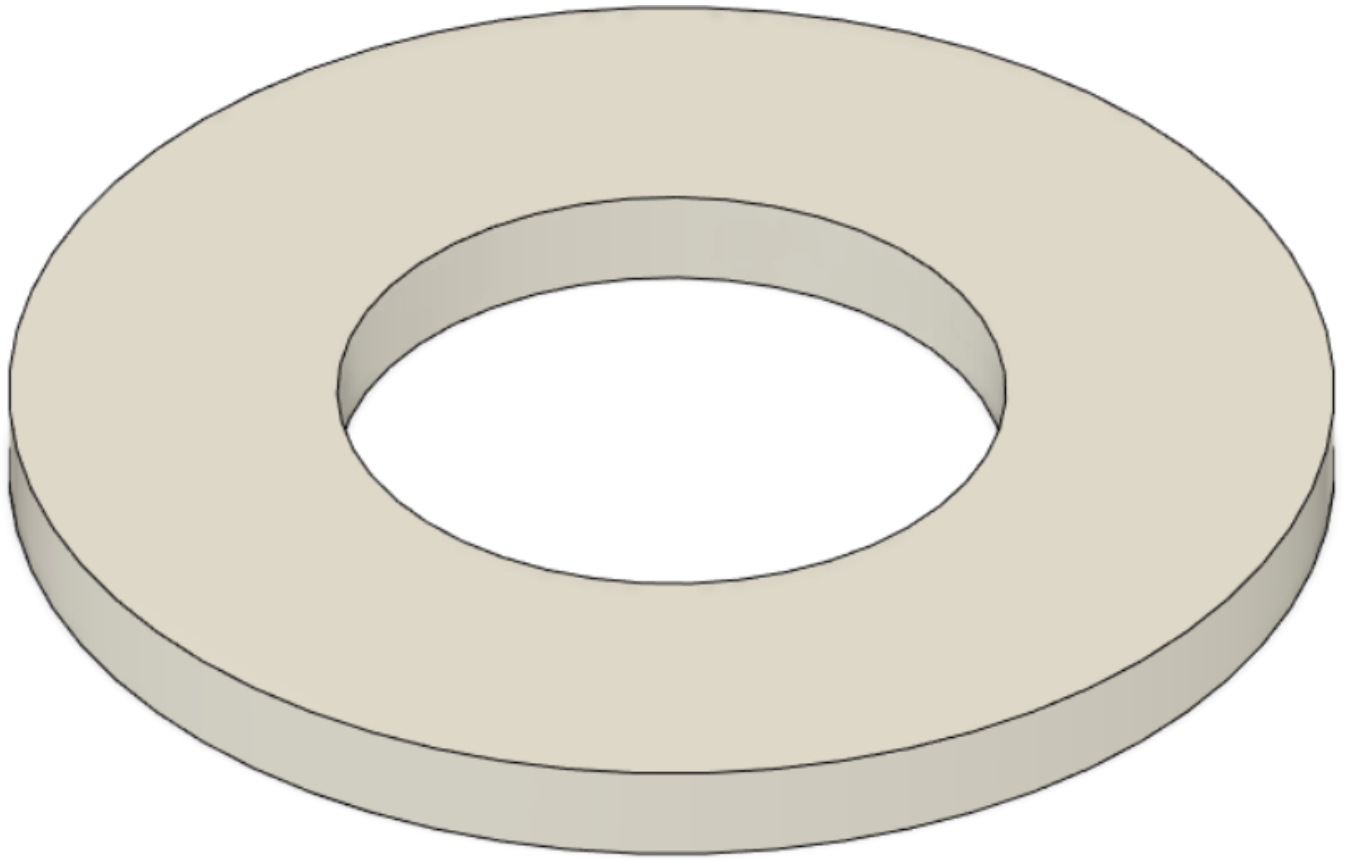
Upper Intake.stl



BOTTOM PIECE OF UPPER INTAKE:

(100% Fill: 2G) , (50% Fill: 2G)

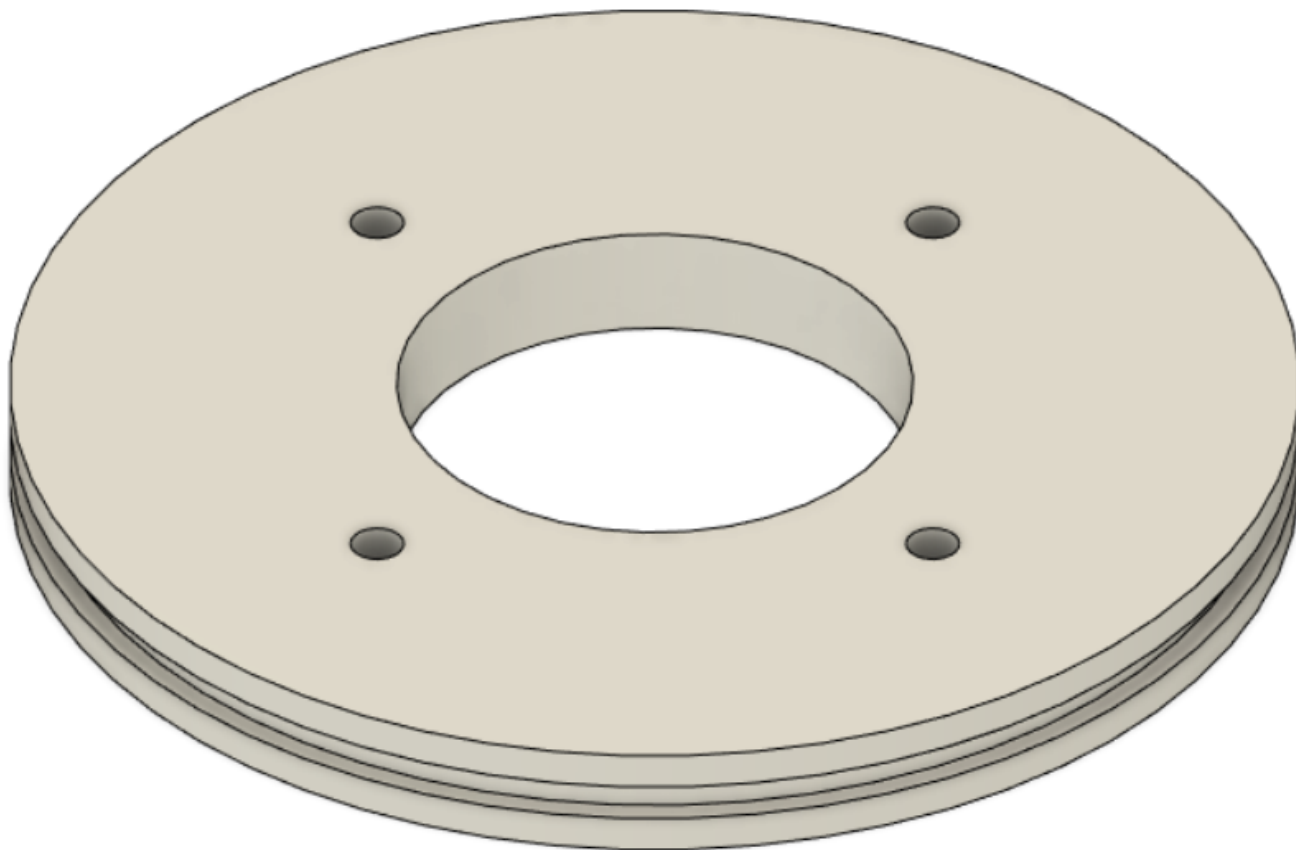
Bottom Piece To Upper Intake.stl



TOP O-RING

(100% Fill: 44G) , (50% Fill: 29G)

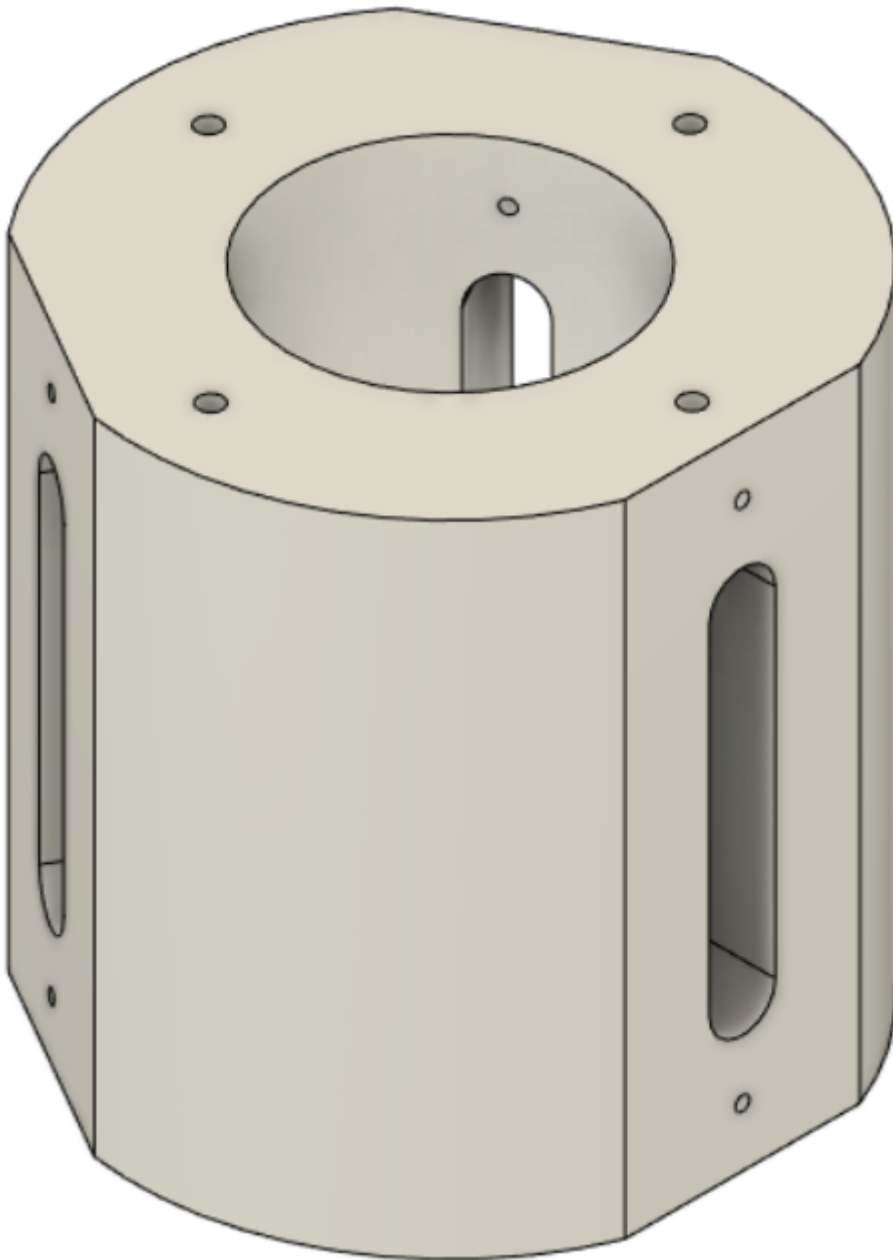
Top O-Ring Plate.stl



LED BODY:

(100% Fill: 206G) , (50% Fill: 120G)

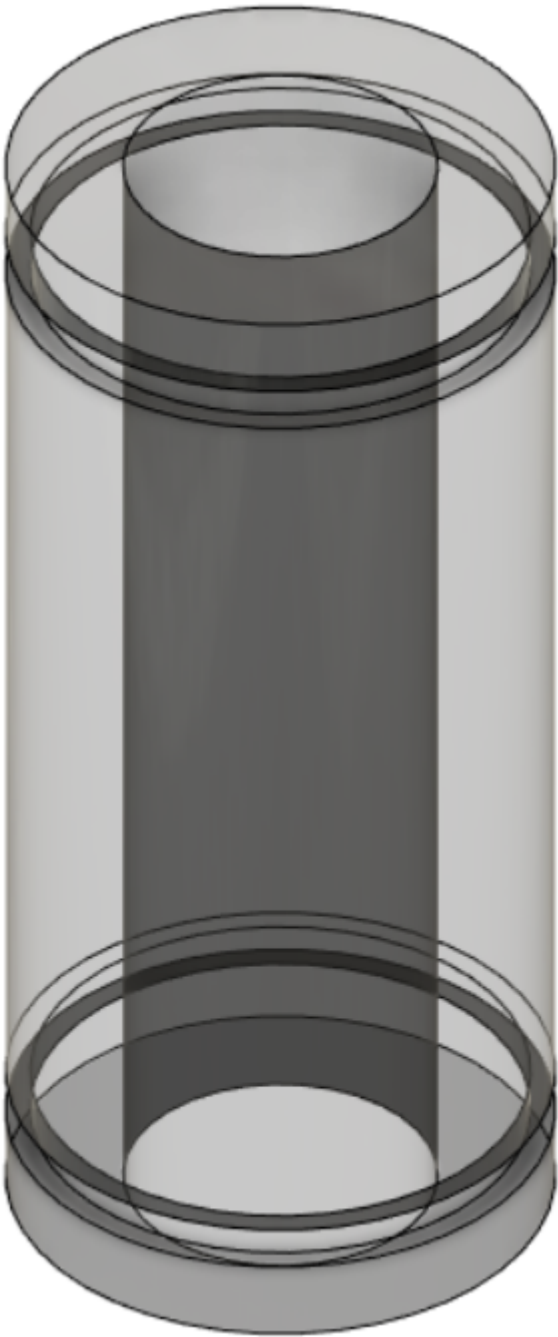
LED Body.stl



OPTICAL LENS:

(100% Fill: 58G) , (50% Fill: 37G)

Optical Lens.stl



OUTER ELECTRODE DIMENSIONS:

OUTER ELECTRODE LED GROOVE STENCIL:

(100% Fill: 6G) , (50% Fill: 6G)

Outer Electrode Stencil .stl

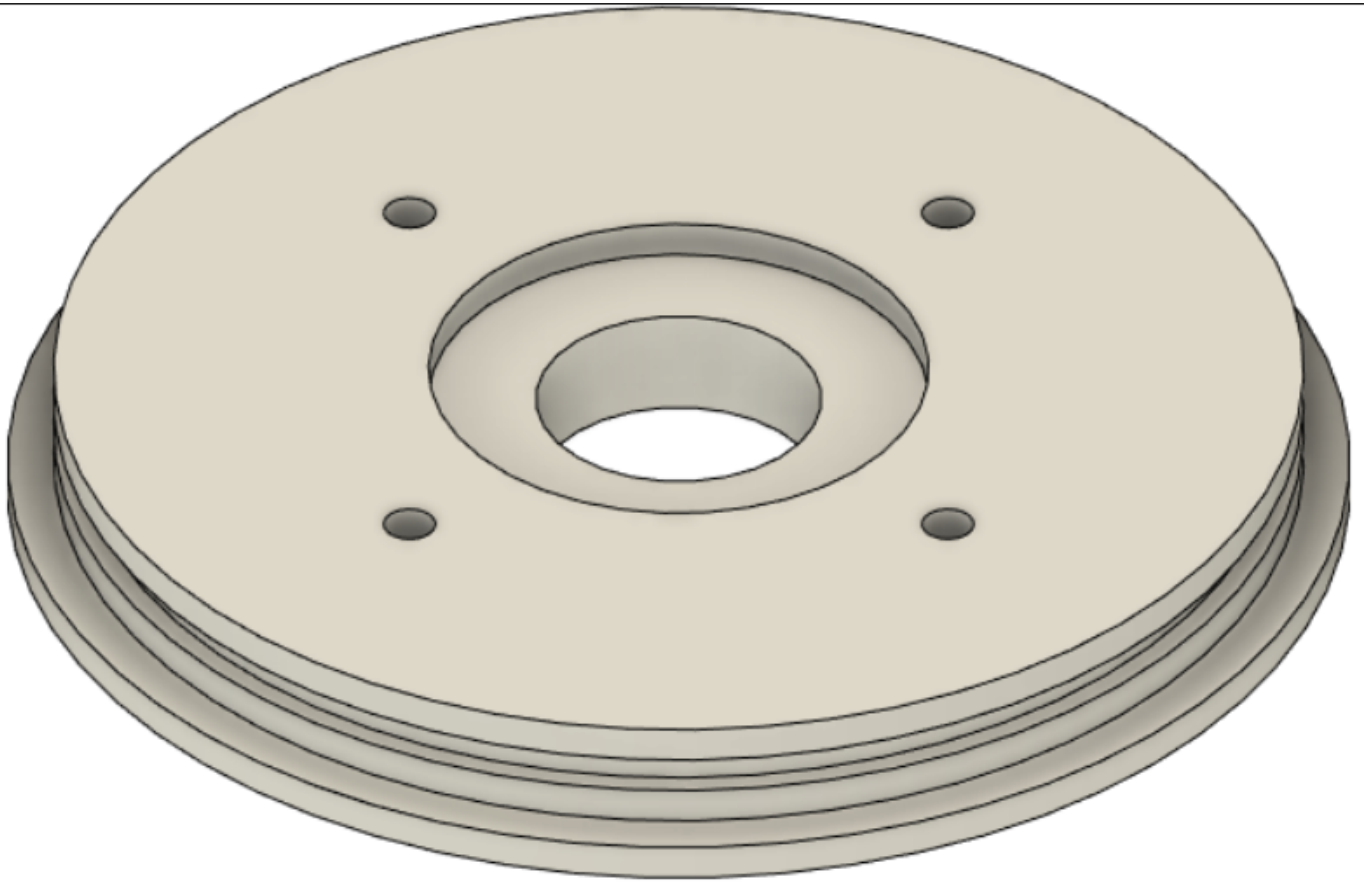


INNER ELECTRODE DIMENSIONS:

BOTTOM O-RING & BLOCK PLATE:

(100% Fill: 68G) , (50% Fill: 43G)

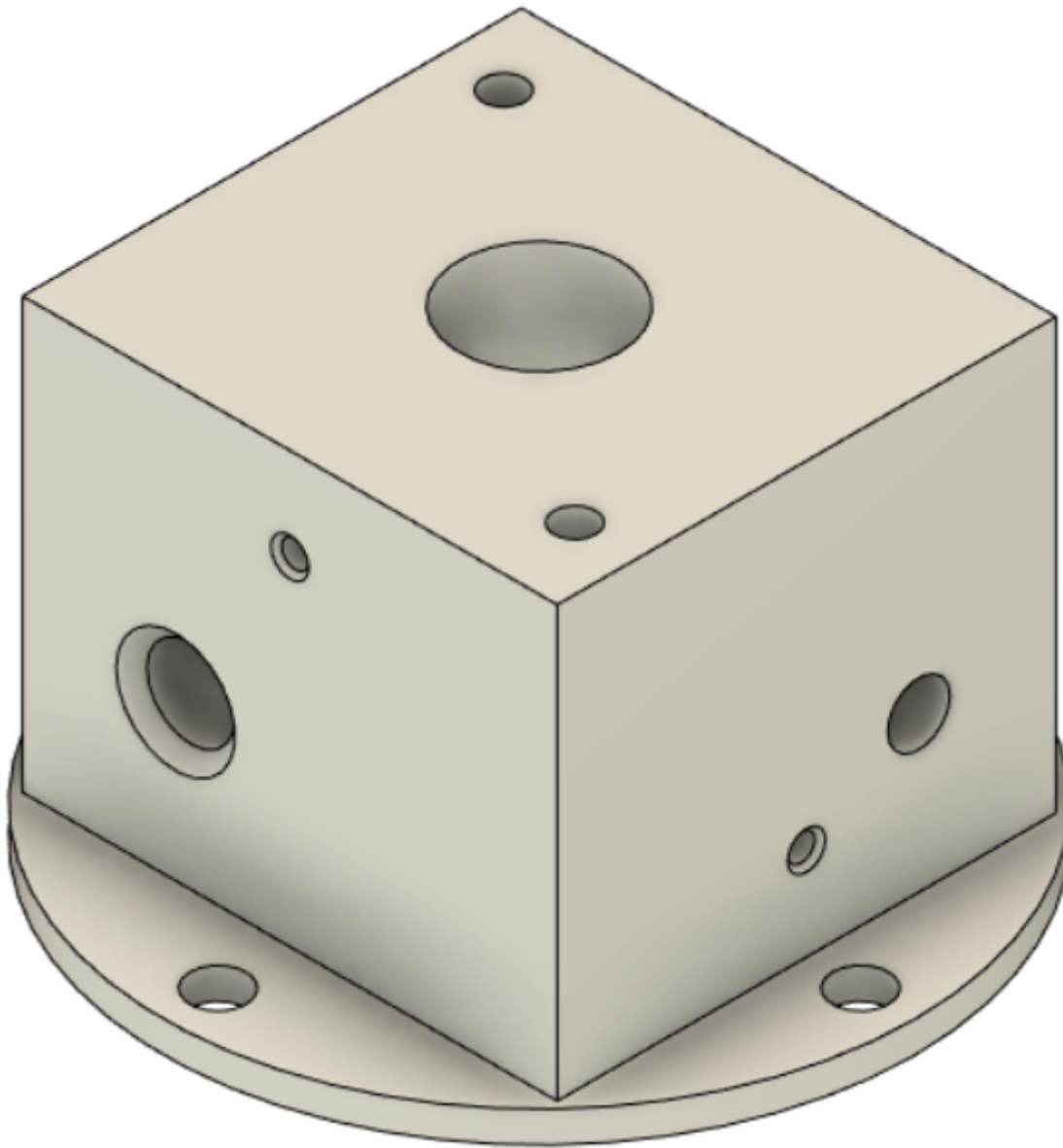
Bottom O-Ring & Block Plate.stl



BOTTOM BLOCK:

(100% Fill: 265G) , (50% Fill: 152G)

Bottom Block.stl



LED COVER:

(100% Fill: 90G) , (50% Fill: 71G)

[LED Cover.stl](#)



TOTAL ASSEMBLY:

