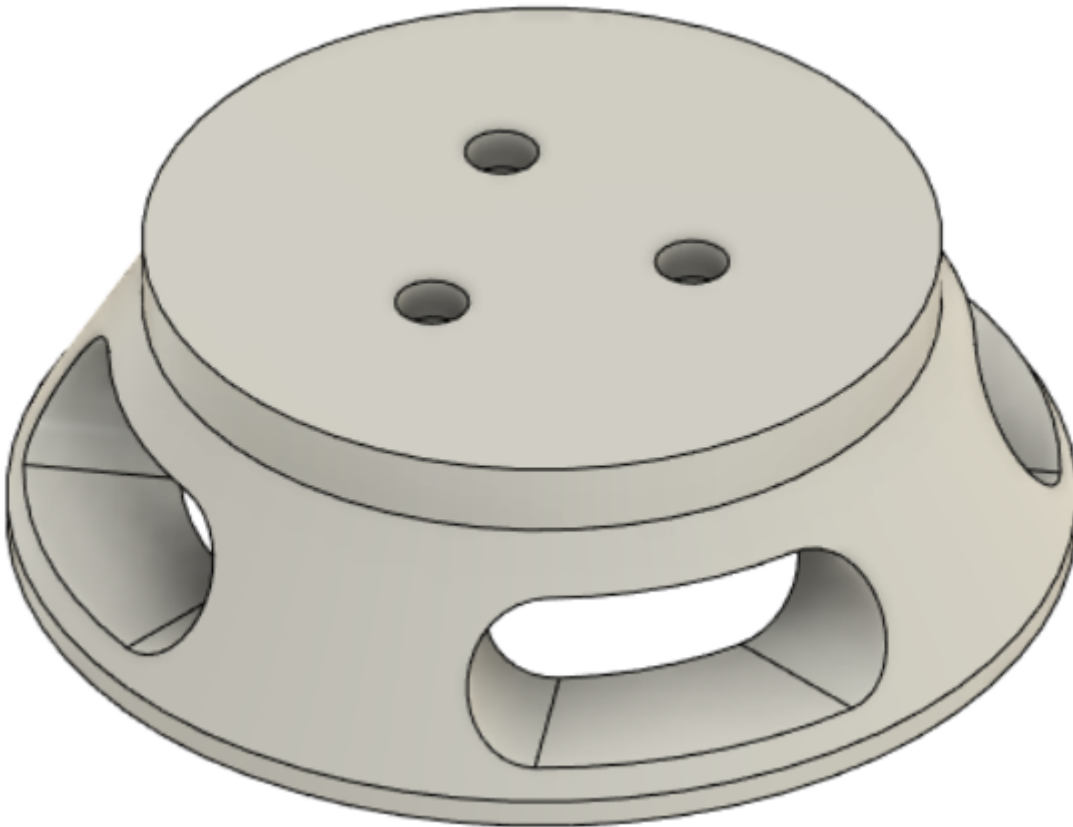


# 3D Printable Replication

## **RETAINING CAP:**

(100% Fill: 65G) , (50% Fill: 45G)

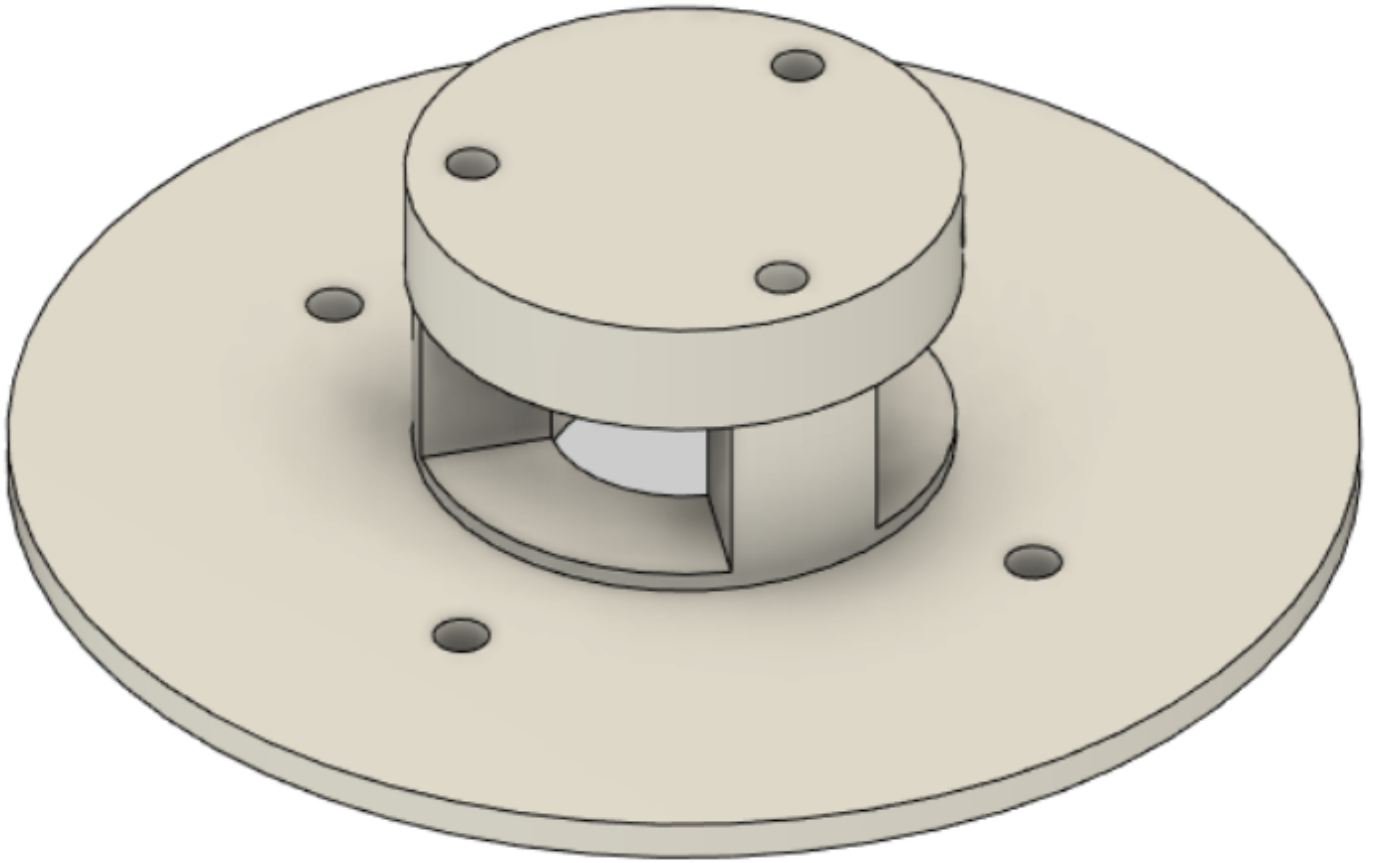
[Retaining Cap.stl](#)



## **UPPER INTAKE:**

(100% Fill: 29G) , (50% Fill: 23G)

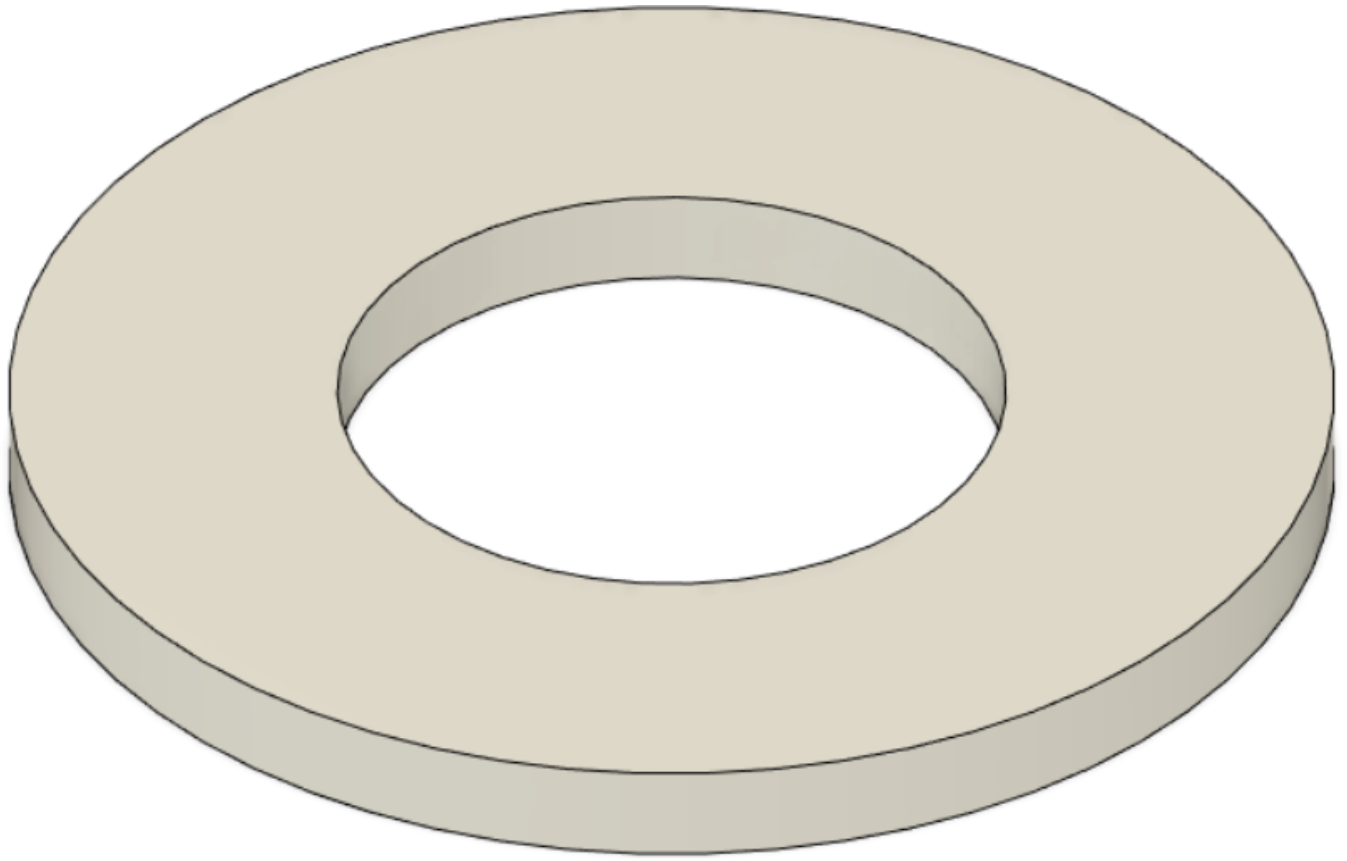
[Upper Intake.stl](#)



## **BOTTOM PIECE OF UPPER INTAKE:**

(100% Fill: 2G) , (50% Fill: 2G)

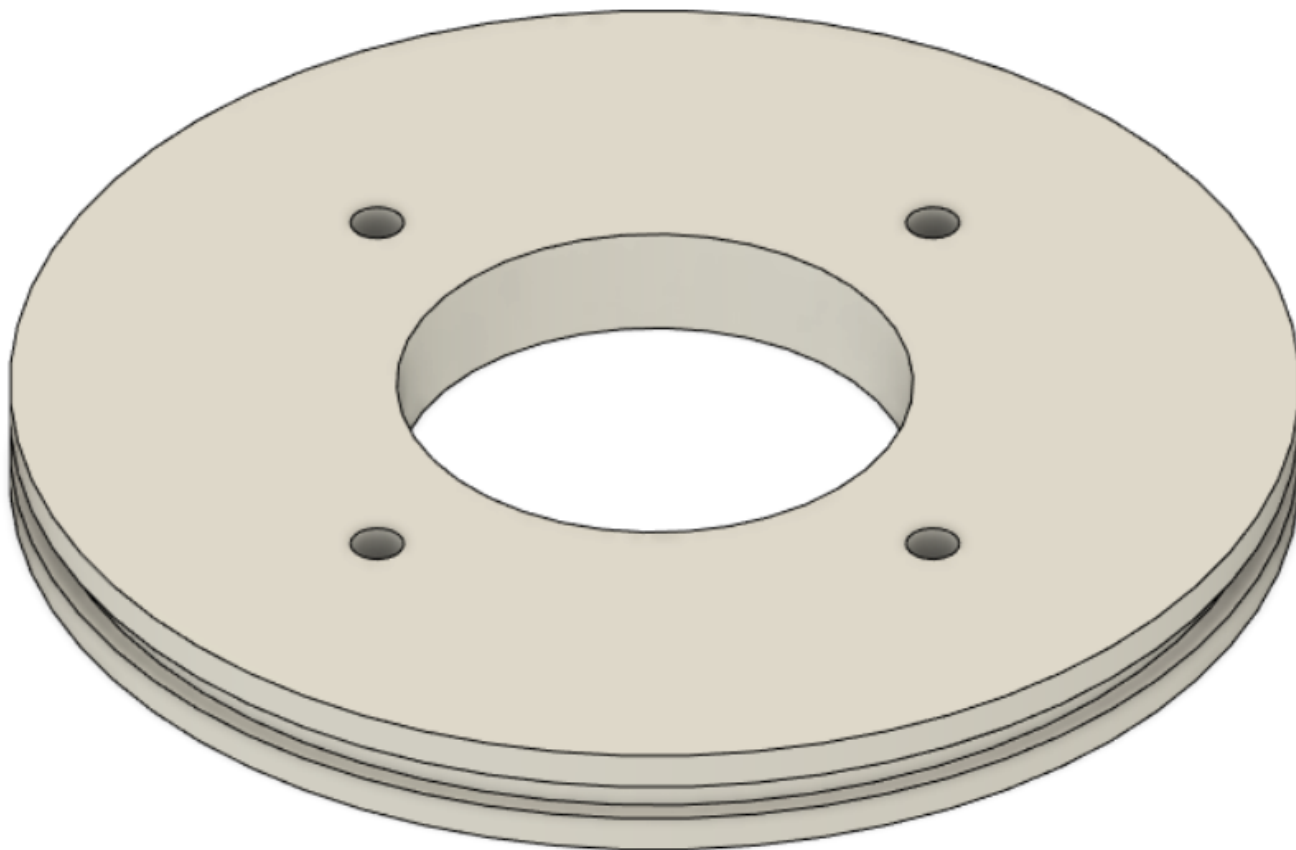
Bottom Piece To Upper Intake.stl



## **TOP O-RING**

(100% Fill: 44G) , (50% Fill: 29G)

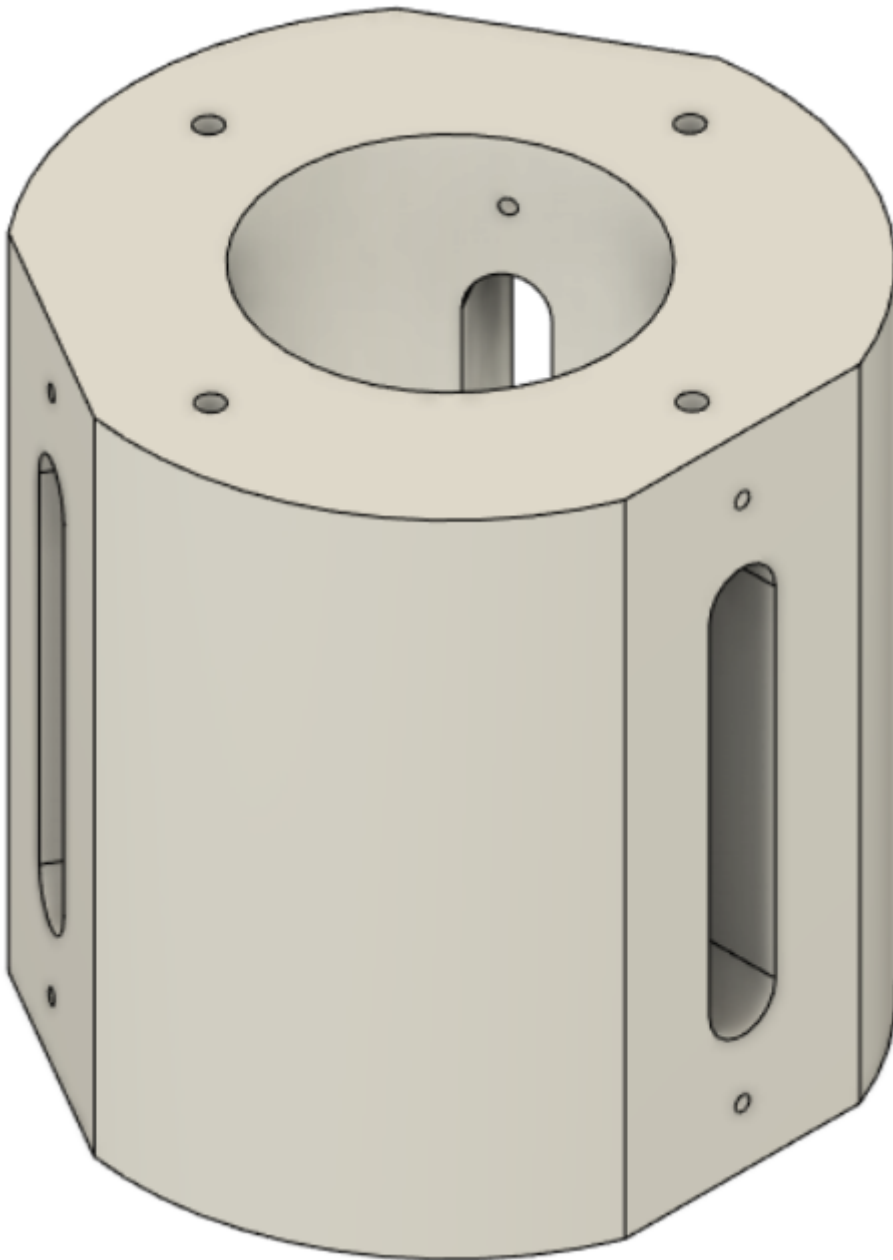
Top O-Ring Plate.stl



## **LED BODY:**

(100% Fill: 206G) , (50% Fill: 120G)

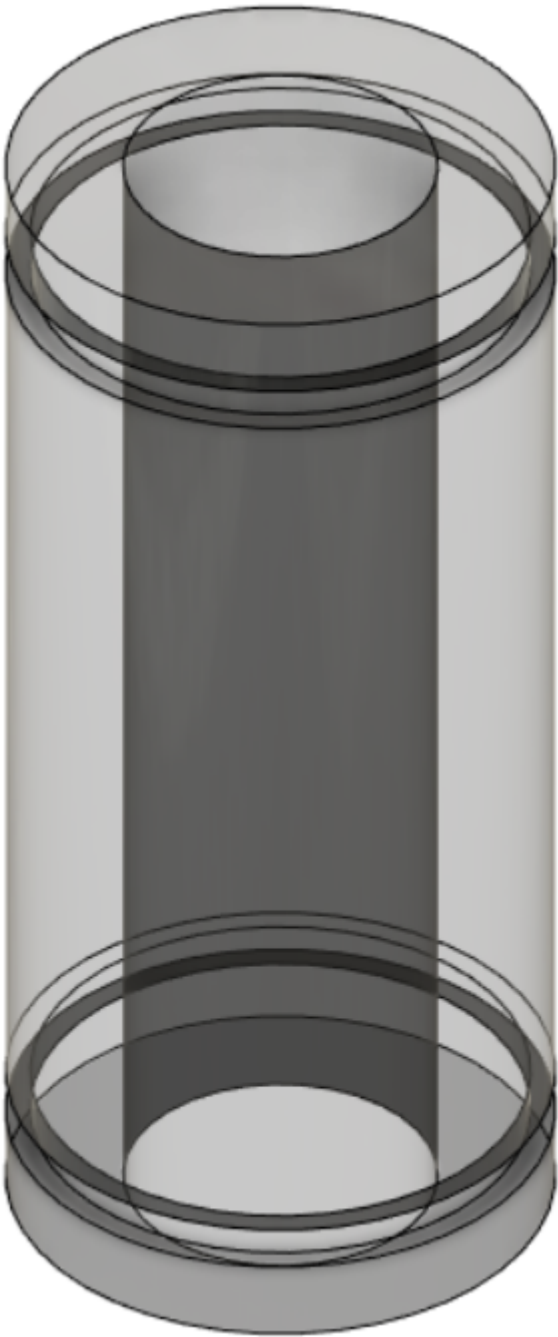
LED Body.stl



## **OPTICAL LENS:**

(100% Fill: 58G) , (50% Fill: 37G)

Optical Lens.stl



## **OUTER ELECTRODE DIMENSIONS:**

## **OUTER ELECTRODE LED GROOVE STENCIL:**

(100% Fill: 6G) , (50% Fill: 6G)

Outer Electrode Stencil .stl

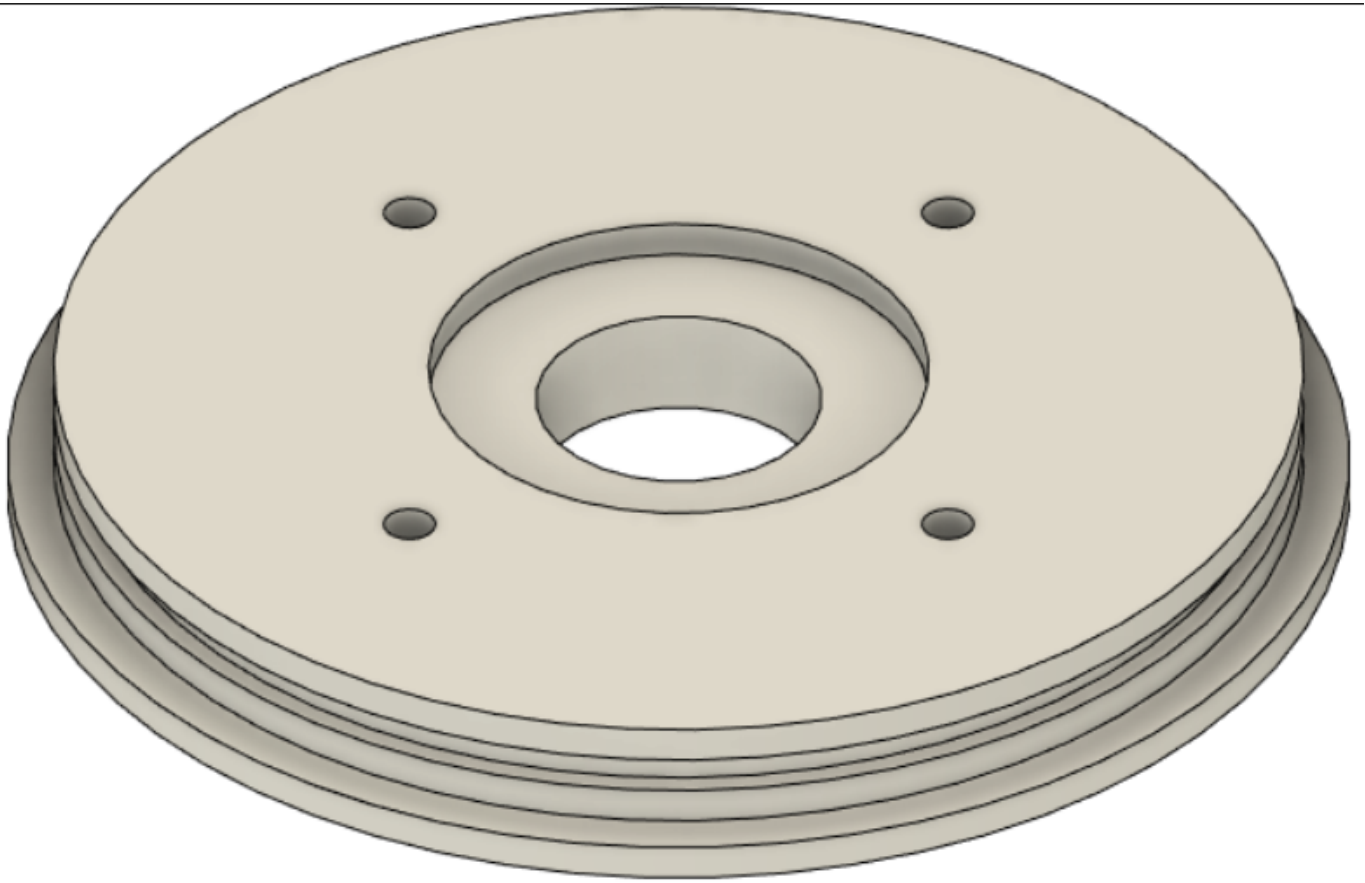


### **INNER ELECTRODE DIMENSIONS:**

### **BOTTOM O-RING & BLOCK PLATE:**

(100% Fill: 68G) , (50% Fill: 43G)

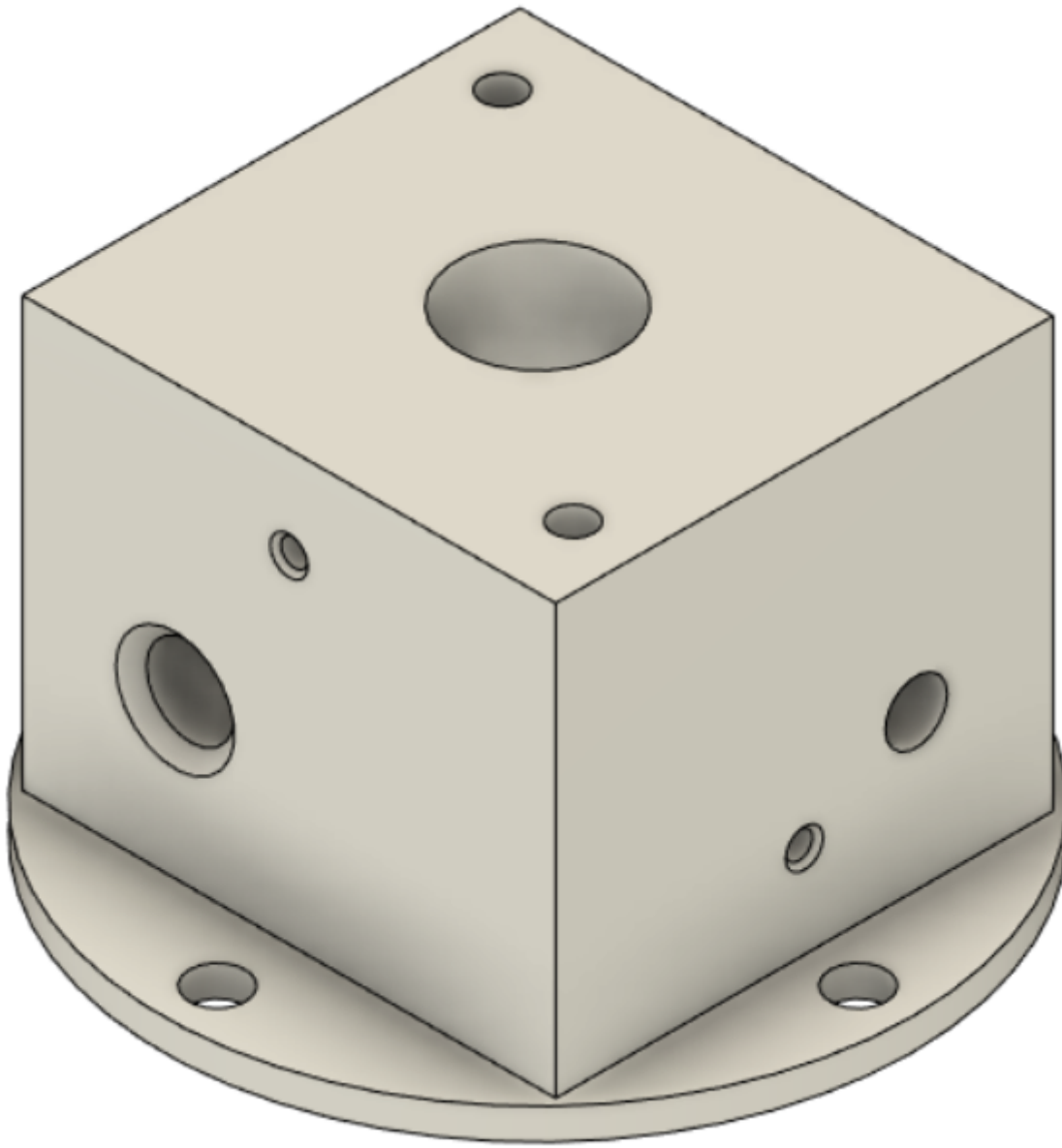
Bottom O-Ring & Block Plate.stl



## **BOTTOM BLOCK:**

(100% Fill: 265G) , (50% Fill: 152G)

[Bottom Block.stl](#)



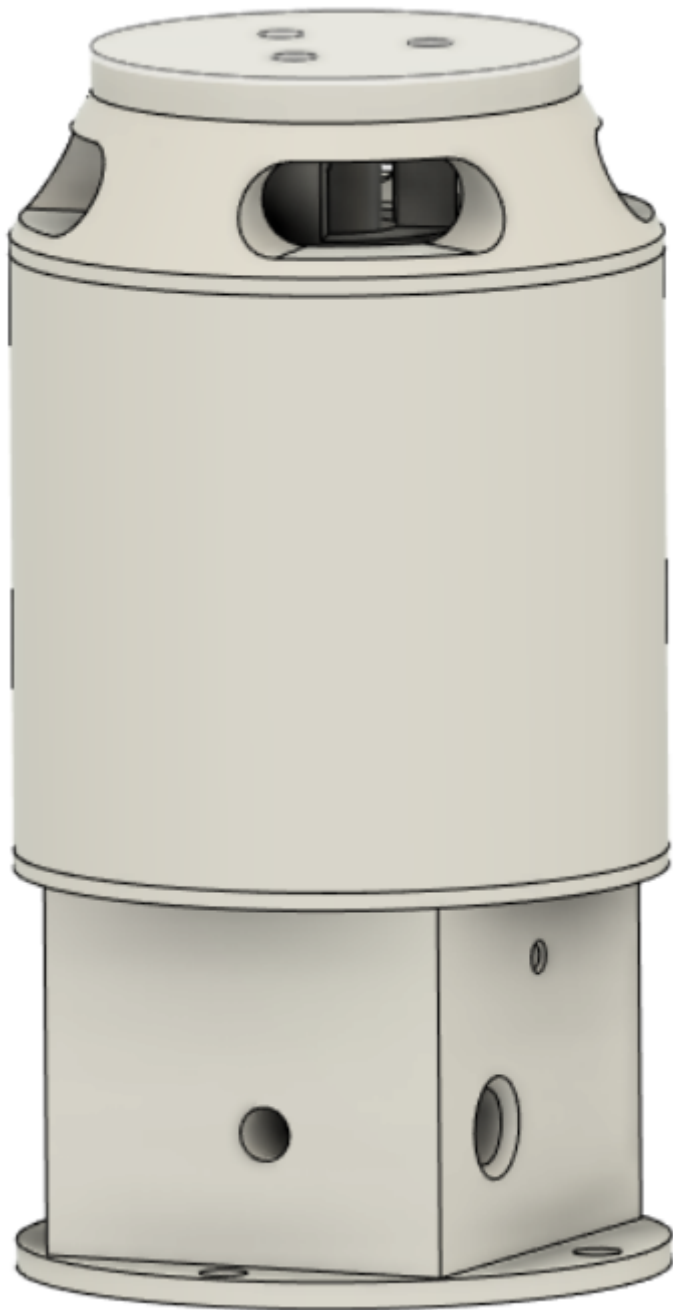
## **LED COVER:**

(100% Fill: 90G) , (50% Fill: 71G)

[LED Cover.stl](#)



**TOTAL ASSEMBLY:**



---

Revision #5

Created 18 May 2023 12:52:37 by Ethan Crowder

Updated 12 September 2023 20:32:06 by Ethan Crowder