

WFC Exhaust Air Reclaimer

To eliminate the possibility of expelling out any **Nitric Oxide** NO gas which is generally produced when an electrical spade occurs inside an internal combustion (IC) engine or any other chemical-oxide that may be present in the exhaust-air, **WFC Exhaust Air Reclaimer** (900) of Figure (9-1) can be utilized to comply with **U.S. Environmental Protection Agency** (EPA) clean Air Act similar in construction to **Voltage Intensifier Circuit** (110) of Figure (4-9), **WFC Exhaust Air Reclaimer** (900) of Figure (9-1) utilizes opposite electrical attraction force ($RR' - SS'$) of voltage potential ($V_a \times V_n$) to separate the atoms of the **Nitric Oxide** NO molecule (typically < 1ppm when running on water) by overcoming **Electrovalent Attraction Force** ($q - q'$) that exist between the polar-charged **Nitrogen** (B+) and **oxygen** (B-) atoms.

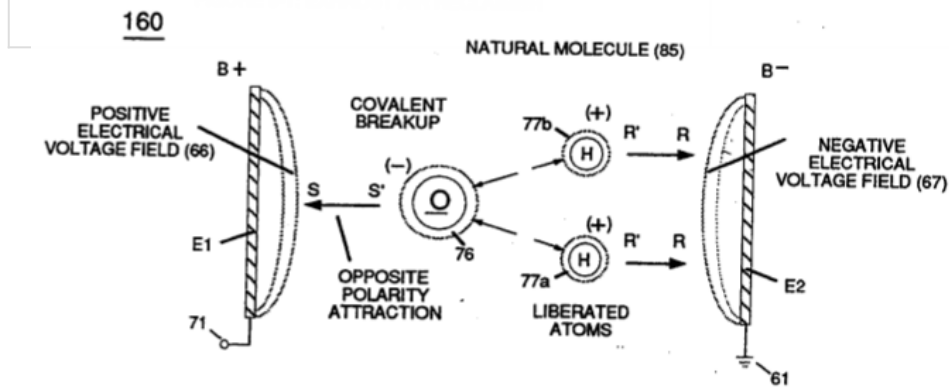
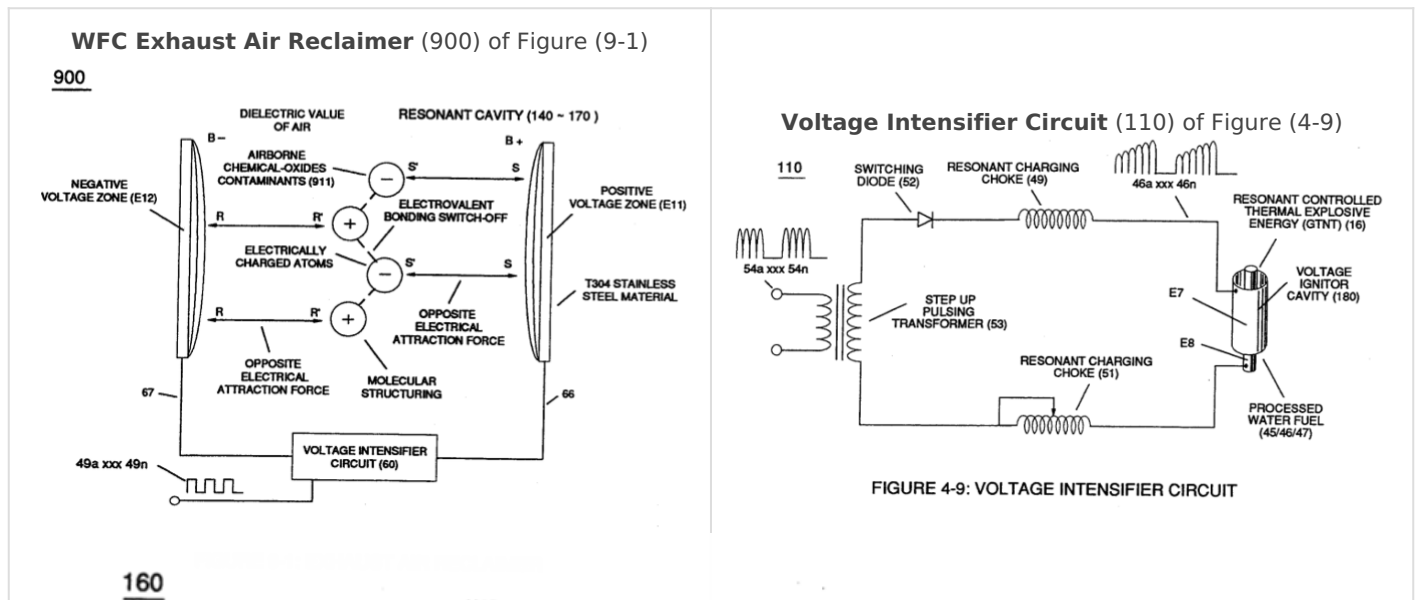


FIGURE 3-26: ELECTRICAL POLARIZATION PROCESS

This is accomplished since the

Voltage Intensifier Circuit (110) of Figure (4-9) is pulsed sensitive (49a xxx 49n) to tune-in to the dielectric properties of the airborne gas-molecule to not only activate **Covalent Switch-Off**

phenomenon (550) of Figure (5-8) by restricting amp influxing to cause "**Electrical Stress**" across **capacitor gap** (Cp) (690) of Figure (7-6) but, also, **elongates** the electrically polarized **Nitric Oxide** NO molecule to change the time share-rate of covalent electron (s)

.•• performing the same function as **Electrical Polarization Process** (160) of Figure (3-26) by which the positive electrical voltage potential (71) attracts the negative charged oxygen atom; while, simultaneously, negative electrical voltage potential (61) attracts the positive charged **Nitrogen Atom**

... pulling apart and separating the atoms of the **Nitric Oxide** NO molecule by way of **Voltage Dynamics** (220) of Figure (3-29) under the law of physics which states "**opposite electrical charges attracts**", as so illustrated in (900) of Figure (9-1).

Voltage Dynamics (220) of Figure (3-29)

220

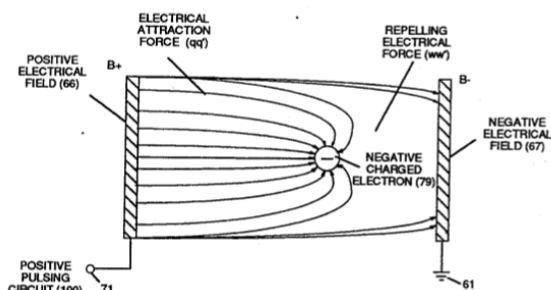


FIGURE 3-29: VOLTAGE DYNAMICS

(900) of Figure (9-1)

900

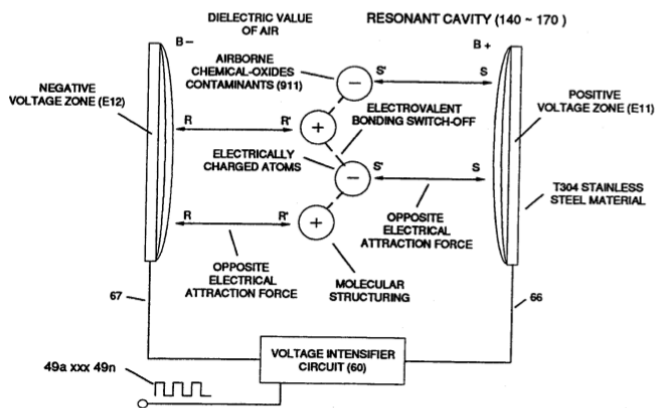


FIGURE 9-1: EXHAUST AIR RECLAIMER

Likewise, other chemical-oxide gas molecule (s) such as **Nitrogen Dioxide** NO₂ (940) of Figure (9-5) exposed to **Electrical Polarization Process** (160) utilizing **Gas Resonant Cavity** (140) undergoes the same molecule-to-atom separation

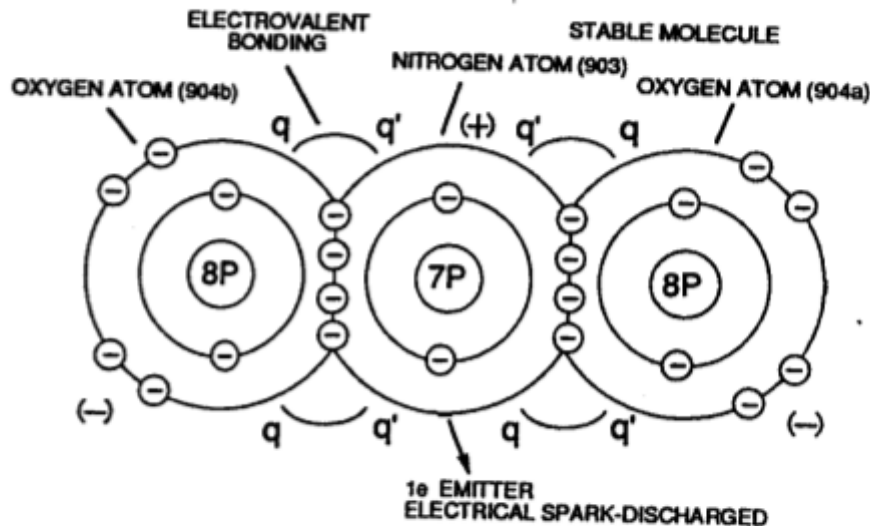


FIGURE 9-5: NITROGEN DIOXIDE NO₂

... thereby, reversing the degradation effect of burning fossil-fuels

- .. liberating oxygen O₂ molecule once again for reuse under "**Earth Ecological Life Support System**"

... collecting atoms under static charged for Industrial reuse

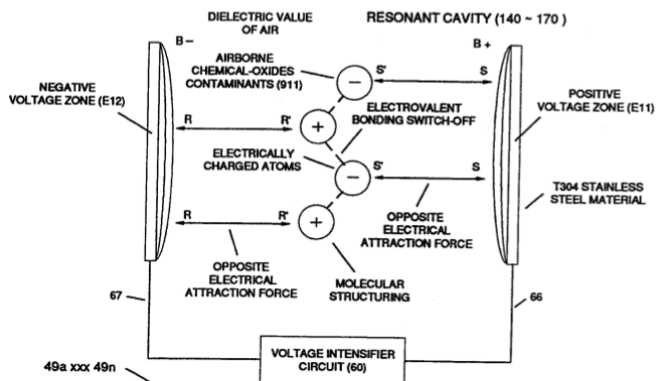
- .. resulting in revitalized clean air once again to sustain all life-forms on Earth.

Of course, water mist derived from hydrogen combustion is removed prior to engine exhaust air-gases entering into and passing through **WFC Exhaust Air Reclaimer System** (900).

Air purification by **atomic deflection** (900) of Figure (9-1) is possible since airborne atoms are neither destroyed nor created during exposure to "**Voltage**" **pulse-stimulation** (E11/E12 ... 49a xxx 49n) propagating "**Electrical Stress**" pulse-waves (Mm'- ASS') which, in turn, induces "**Electrovalent Switch-off**" phenomenon (550) of Figure (5-8).

atomic deflection (900) of Figure (9-1)

900



"Electrovalent Switch-off" phenomenon (550) of Figure (5-8)

550

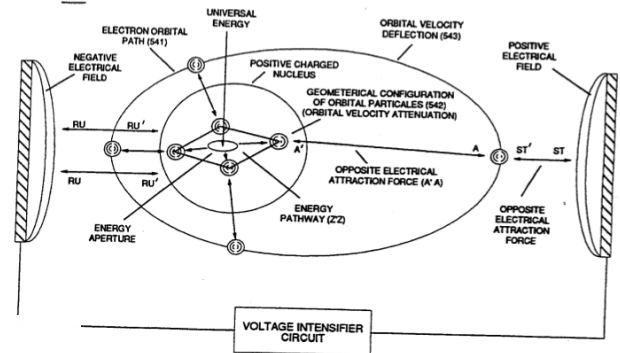


FIGURE 5-8: COVALENT SWITCH-OFF

530

ENERGY RECYCLING SPECTRUM

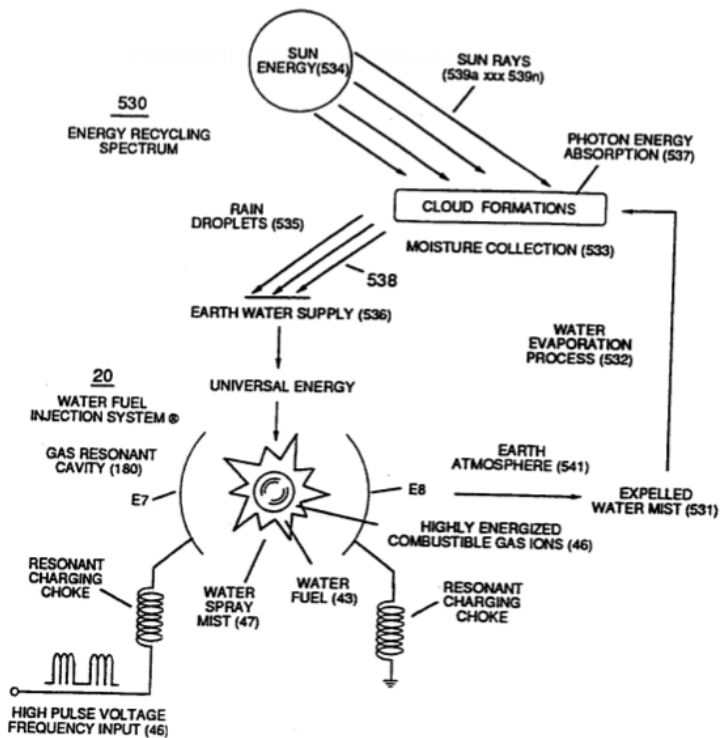


FIGURE 5-6: OPEN ENDED ENERGY SYSTEM

Energy enhancement of these liberated

airborne atoms during the process of molecular-separation (900) comes either from **Photon Absorption Process** (537) of Figure (5-6), or from **Energy Pumping Action** (520) of Figure (5-3), or combination of both **Energy Sources**

... Sun Energy (534) in retrospect to **Universal Energy Pathway 2** of Figure ~, as so illustrated in **"Energy Recycling Spectrum** (530) of Figure (5-6).

In alternate form, solid state electrical photon-light source (**Light Emitting Diodes**) (1100 xxx 116n) of Figure (3-33) replaces **Sun Rays** (539) of Figure (5-6) when "**Voltage Tickling of State Space**" (770 of Figure (8-1) acts as a "energy generator" by way of "particle oscillation" ~ of Figure ~ as to (~ of Figure ~ to cause/activate **Atomic Energy Level Adjustment** (540) of Figure (5-7), as illustrated in **Gas Processor Process** (260) of Figure (3-33) as to Figure (1-17).

(**Light Emitting Diodes**) (1100 xxx 116n) of Figure (3-33)

260

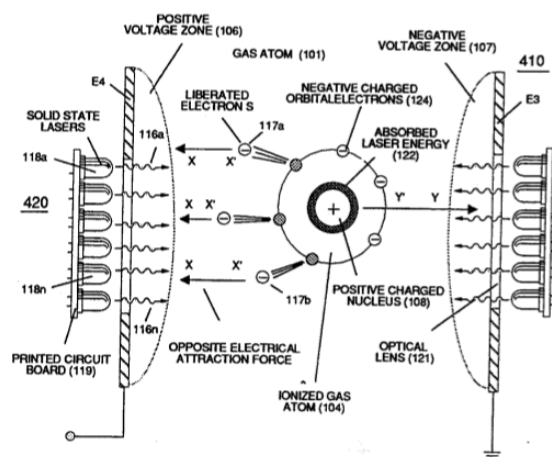


FIGURE 3-33: GAS PROCESSOR

Sun Rays (539) of Figure (5-6)

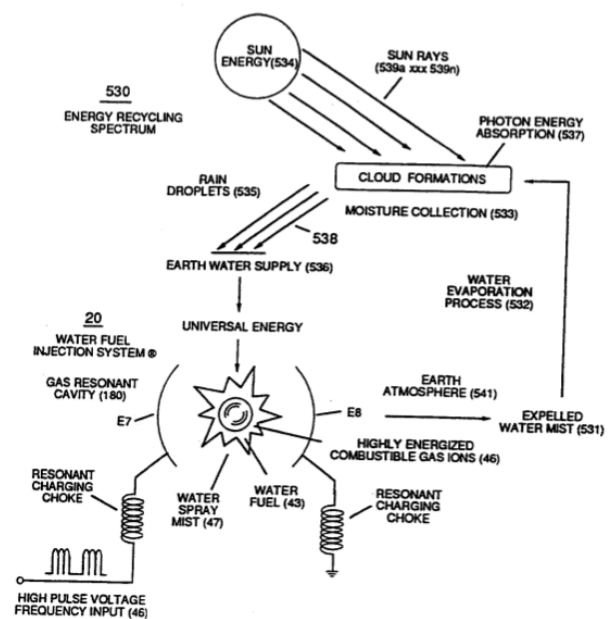
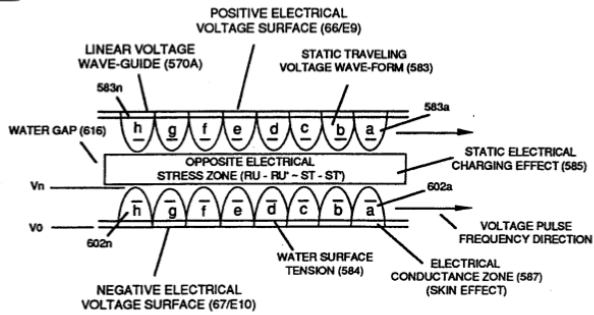


FIGURE 5-6: OPEN ENDED ENERGY SYSTEM

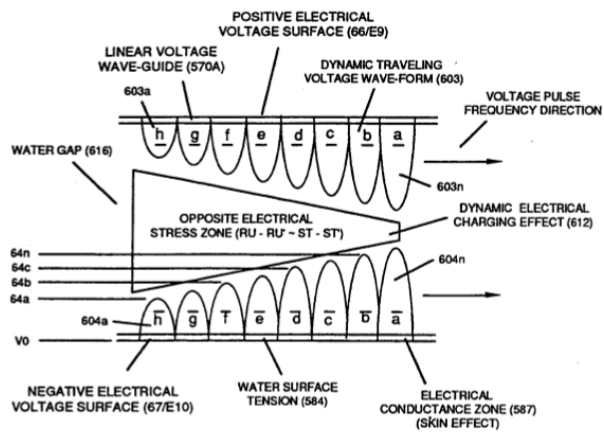
„Voltage Ticking of State Space“ (770A) of Figure (8-1)

770



(A) STATIC VOLTAGE STIMULATION

„Voltage Ticking of State Space“ (770B) of Figure (8-1)



(B) DYNAMIC VOLTAGE STIMULATION

FIGURE 8-1: ELECTRICAL CHARGING STAGE

Atomic Energy Level Adjustment (540) of Figure (5-7)

540

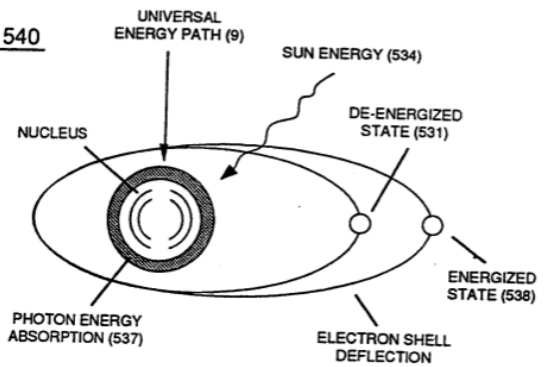


FIGURE 5-7: ATOMIC ENERGY LEVEL ADJUSTMENT

Figure (1-17)

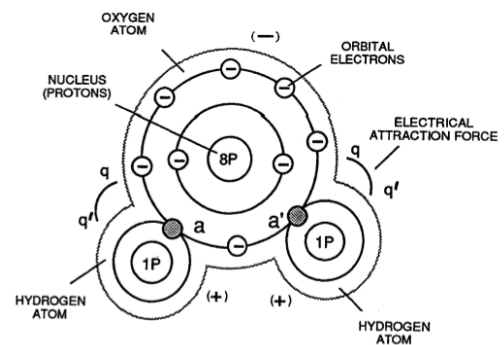


FIGURE 1-7: ELECTRICAL CHARGES OF THE WATER MOLECULE

Revision #4

Created 19 December 2023 03:59:55 by Chris Bake

Updated 20 December 2023 04:43:51 by Chris Bake