

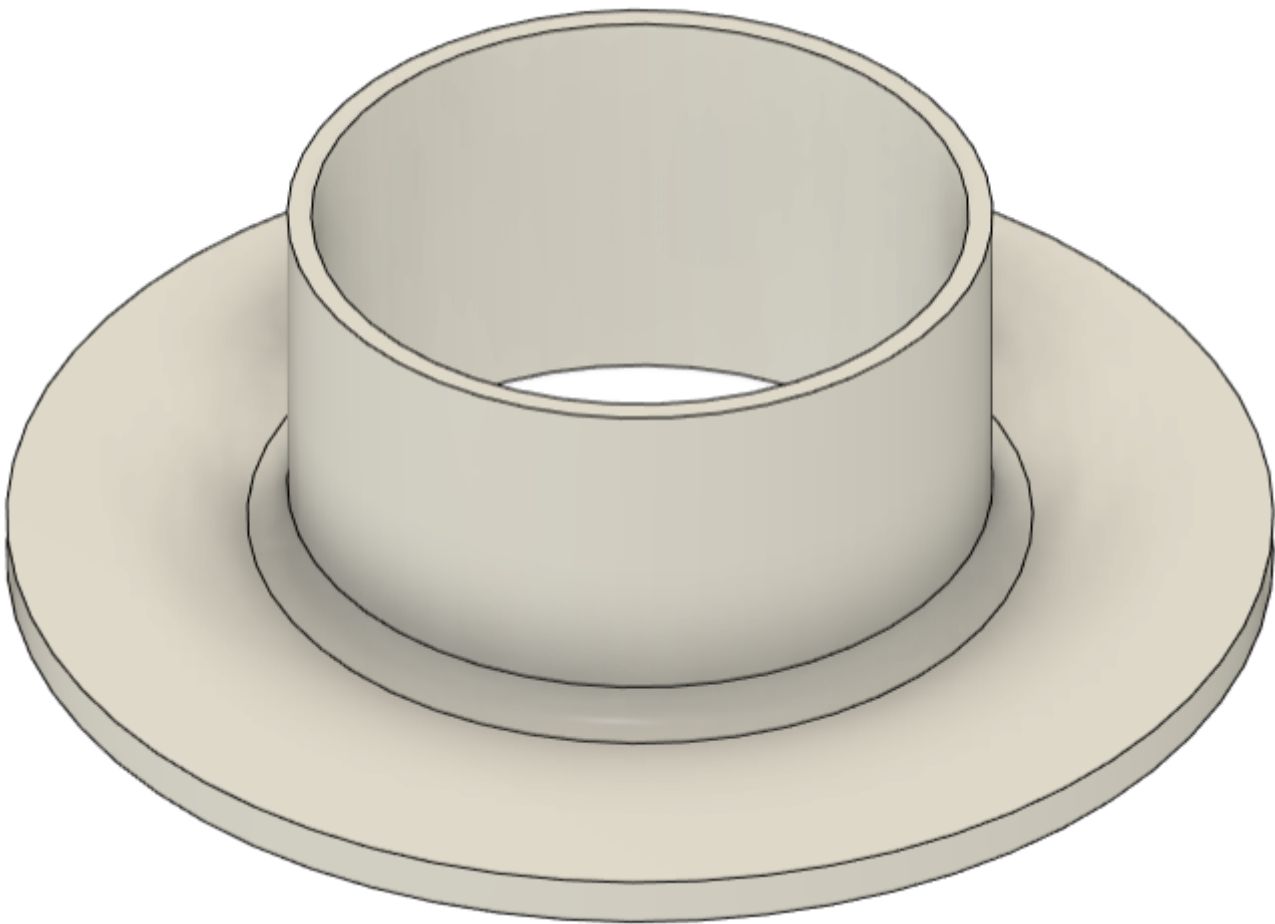
VIC4 Cores, Bobbin STLs

Amazon link to cores: [Ferrite U Cores](#)

Bobbin half pieces: [VIC4 Half Bobbin_.stl](#)

Bobbin Half Pieces:

Bobbins will need to be super glued together. There is a 0.040" larger diameter on purpose to accommodate discrepancies with ferrite cores not aligning perfectly. These bobbins will except up to 3000 turns of #30 gauge wire if winding principles are adhered to,.



Revision #2

Created 5 October 2023 01:38:19 by Ethan Crowder

Updated 5 October 2023 01:45:50 by Ethan Crowder