

A Preview of Water Fuel Cell Technology and This Book

image1656594466482.png

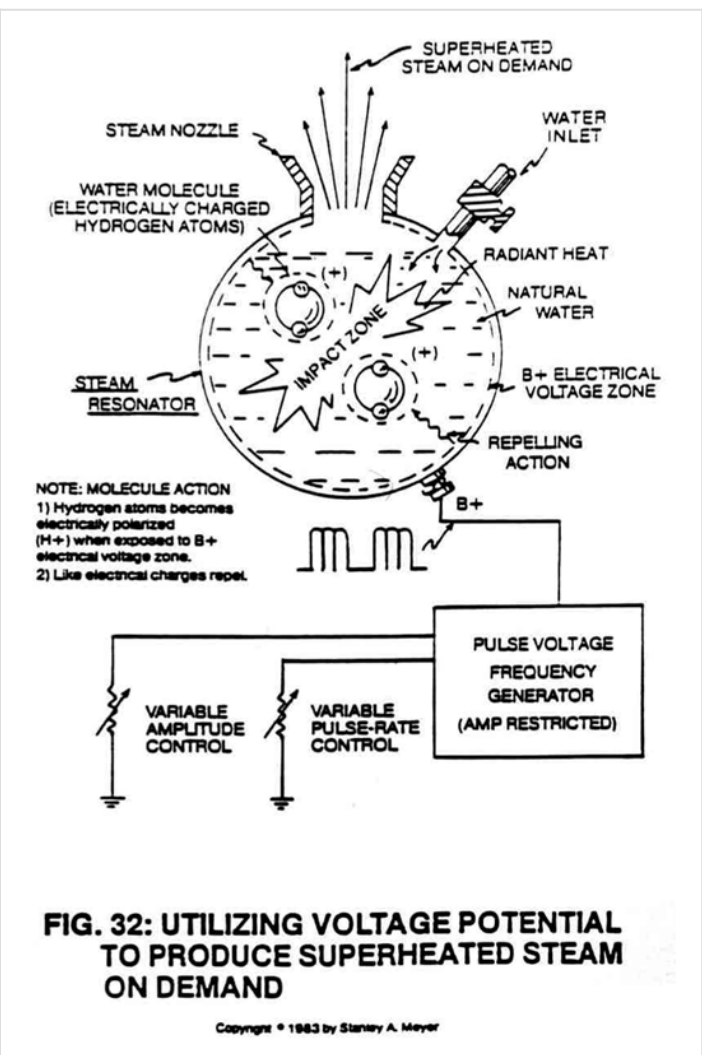
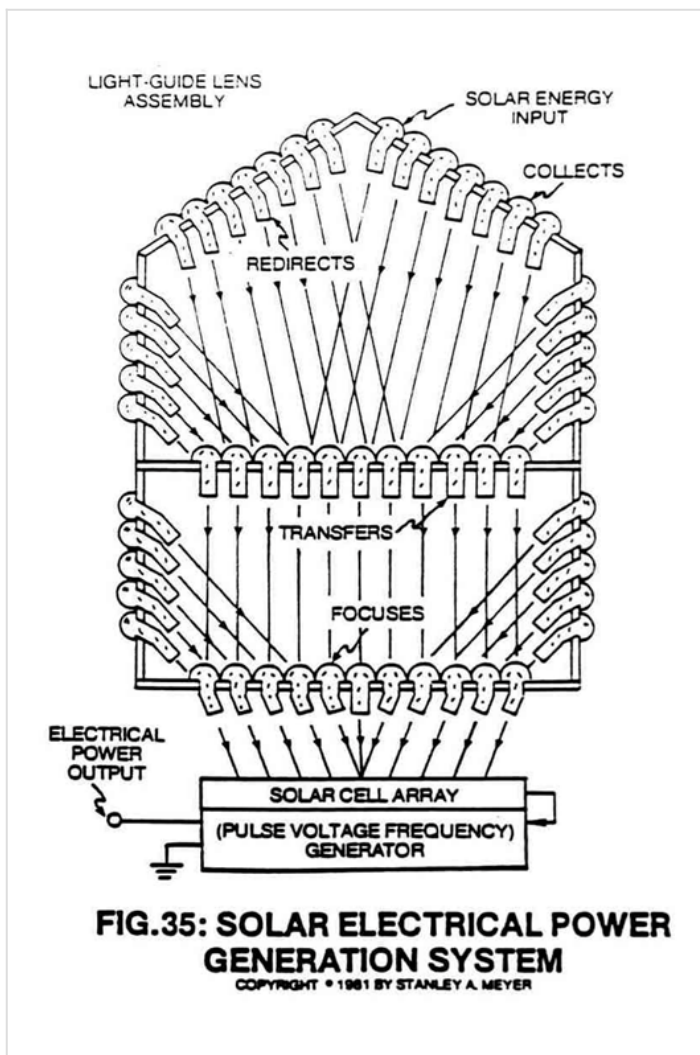
Water Fuel Cell Technical Base (graphically illustrated in

Figure A) is a sophisticated integration of many energy systems integrated together to form a versatile energy package...

utilizing sun, air and water to produce electrical energy, gas, mechanical, and/or heat energy without the aid of additive chemicals or fossil fuels.

As shown in Figure A, the flow diagram is subdivided into four major areas: electrical power generators, hydrogen gas generators and processors, regenerative energy feedback systems, and reclaim and recycling systems.

A solar energy processing system (Figure 35) as well as steam resonator system (Figure 32) can be added or retrofitted to this energy grid system.



Each system application offers a full set of features and several applications can be used at the same time.

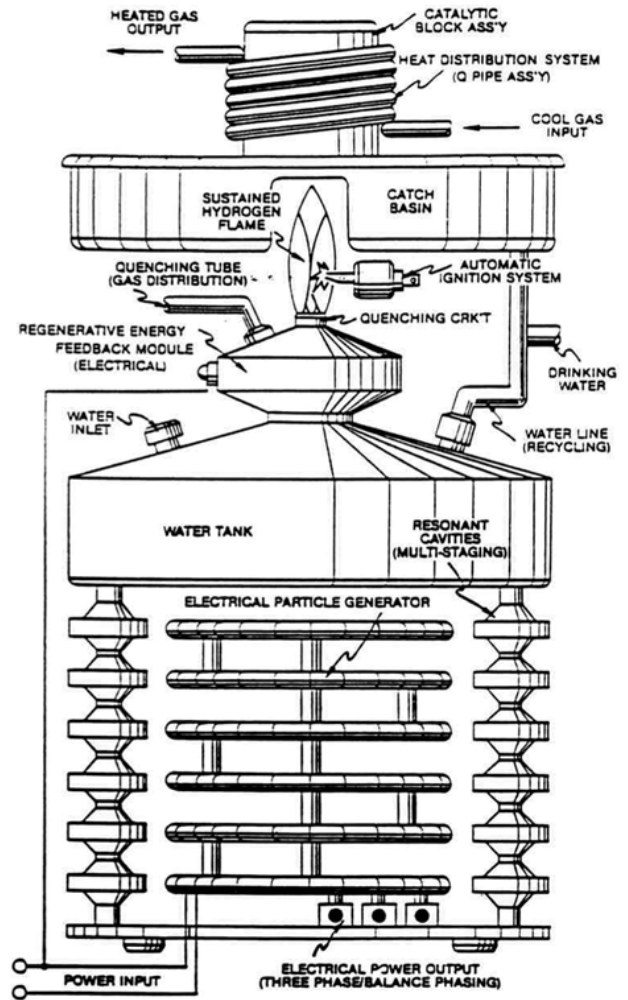
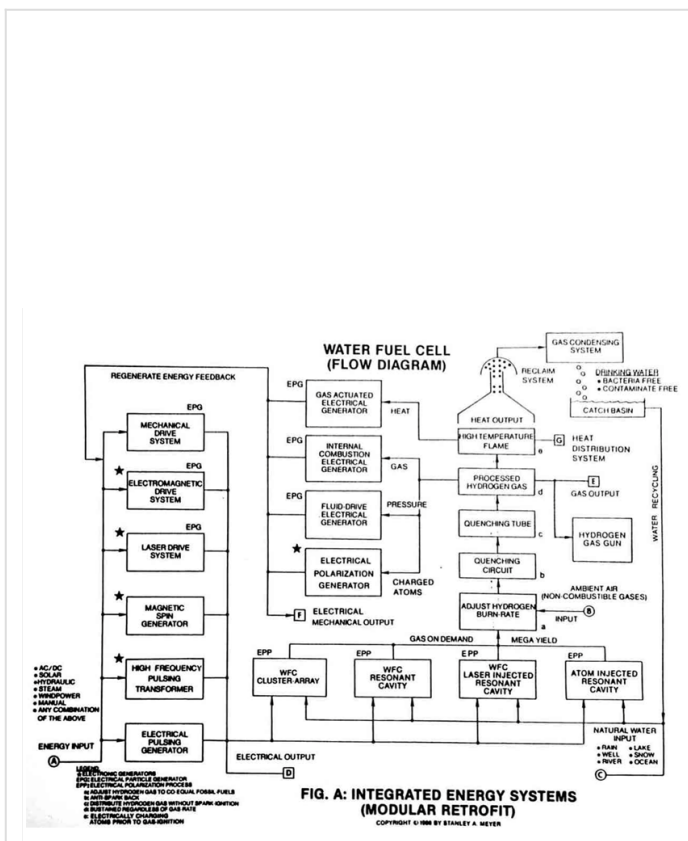
You can easily move from one energy system to another for a predetermined energy need.

Basically, the system grid is arranged in such a way as to produce electrical energy from natural water.

Using that electrical energy to produce hydrogen energy from water for utilization.

Since sun, water and air determine system economics, the hydrogen age can now replace the fossil fuel era.

The Water Fuel Cell of figure B is the composite expression of Flow Diagram Figure A.



ELECTRICAL POLARIZATION PROCESS: COVALENT BREAK-UP:

Once the atoms of the water molecule become electrically charged, the covalent bonding (sharing electrons between atoms) become non-existent since the electrically charged fields surrounding the atoms disrupt the electron movement...causing the water molecule to split into its component parts...liberating the electrically charged hydrogen and oxygen atoms for utilization (see Figures 2 and 3).

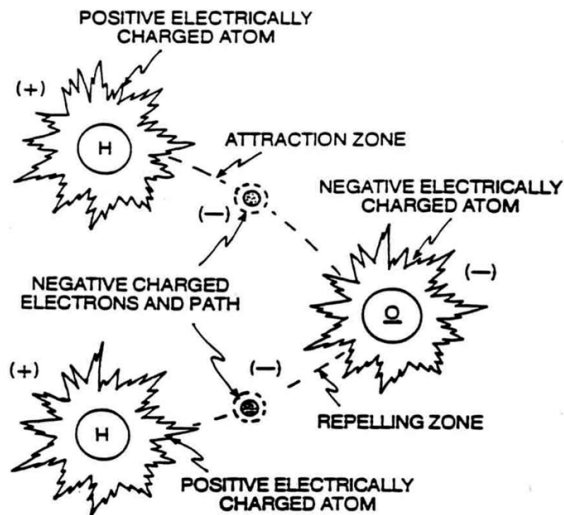


FIG 2: ELECTRICAL POLARIZATION OF THE WATER MOLECULE

COPYRIGHT © 1981 BY STANLEY A. MEYER

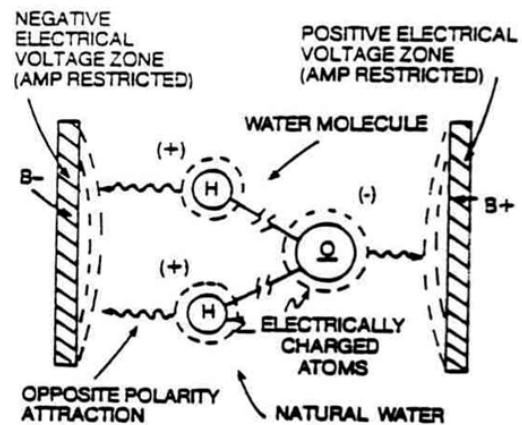


FIG 3: UTILIZING VOLTAGE POTENTIAL TO SPLIT THE WATER MOLECULE

Copyright © 1981 by Stanley A. Meyer

Basically, the positive electrically charged hydrogen atoms will momentarily attract the negative charged electrons, while at the same time, the negative electrically charged oxygen atom momentarily repels said moving electrons...preventing electron sharing between the atom...stabilizing the atom energy levels to stable state...liberating the atoms from the molecule.

EXPLOSIVE FORCE OF HYDROGEN vs JOULES OF ENERGY:

The scientific expression "gtnt" refers to the explosive force per atomic weight of hydrogen during detonation under pressure.

Joules of energy (*watt-hour*) should not be used in place of "gtnt" (*explosive force of detonation*) when equating the power yield of hydrogen undergoing atomic breakdown.

Image not found or type unknown

DEFINITION OF

TERMS:

The law of physics is defined as duplicating a given function continuously without change.

The ensuing chapters and pages briefly describe the basic fundamental principles of system operability and purpose of development.

See Chart C as to Flow Diagram A and Fuel Cell B.

The wording and phraseology used in this technical brief are directed to the general public to communicate a simple but profound answer to the energy crisis.

SCIENTIFIC DISSERTATION: ELECTRICAL PHENOMENA:

Physics is a composite of many fields of studies...of which the electrical phenomenon is one of them.

Voltage is electrical pressure or force within an electrical system called potential.

The words "**voltage potential**" herein used describe the purpose of performing work whenever different energy levels exist within the electrical system: unlike charges attract while like charges repel.

The voltage potential phenomenon is simply illustrated in the cyclotron where the electrically charged particles are accelerated by an alternating electrical field.

The brightness control on your T.V. set or computer monitor performs a similar function.

In like manner, the Water Fuel Cell utilizes the voltage potential phenomenon by setting up dual voltage zones to attract opposite electrically charged atoms: the positive electrical charged hydrogen atoms being attracted to the negative electrical charged voltage zone while the negative electrical charged oxygen atoms are being attracted to the positive electrical charged voltage zone.

This process is non-reversible since like charges repel each other.

Therefore,

A proven function becomes a Law of Definition.

Example:

Law of Motion, Law of Inductance, and so on.

Consequently, the Law of Definition as to proven function is herein used throughout this technical brief as merit of expression.

The Law of Change:

A Law of Physics establishes a proven function based on preset conditions...change any one of the conditions and the law no longer applies.

Therefore, the word groupings "voltage potential," "Law of Definition," the "Law of Change," "Electrical Polarization Process" and "gtnt" should not be taken out of context when reading this technical brief.

image-1656594649466.png

Image not found or type unknown

image-1656594673317.png

Image not found or type unknown

Revision #6

Created 30 June 2022 12:58:30 by Ethan Crowder

Updated 22 October 2024 02:38:37 by Chris Bake